



[Go to Product page](#)

Datasheet for ABIN6750082
anti-YIF1A antibody (AA 25-74)

1 Image

Overview

Quantity:	100 µL
Target:	YIF1A
Binding Specificity:	AA 25-74
Reactivity:	Human, Rat, Cow, Guinea Pig, Horse, Pig
Host:	Rabbit
Clonality:	Polyclonal
Conjugate:	This YIF1A antibody is un-conjugated
Application:	Western Blotting (WB)

Product Details

Immunogen:	Synthetic peptide located between aa25-74 of human YIF1A (O95070, NP_065203). Percent identity by BLAST analysis: Human, Chimpanzee, Gorilla, Orangutan, Gibbon, Galago, Rat, Bovine, Horse, Pig, Guinea pig (100%), Marmoset, Mouse, Elephant, Panda, Dog (92%). Type of Immunogen: Synthetic peptide
Specificity:	Human YIF1A
Predicted Reactivity:	Percent identity by BLAST analysis: Human, Horse, Bovine (100%) Mouse, Rat (92%).
Purification:	Immunoaffinity purified

Target Details

Target:	YIF1A
---------	-------

Target Details

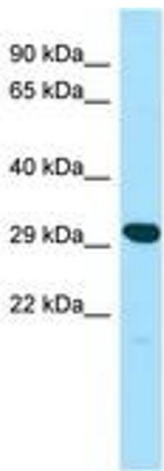
Alternative Name:	YIF1A (YIF1A Products)
Background:	Name/Gene ID: YIF1A Synonyms: YIF1A, 54TMp, 54TM, FinGER7, HYIF1P, Protein YIF1A, Yip1p-interacting factor, YIF1P, YIF1
Gene ID:	10897
NCBI Accession:	NP_065203
UniProt:	O95070
Pathways:	ER-Nucleus Signaling , SARS-CoV-2 Protein Interactome

Application Details

Application Notes:	Optimal working dilution should be determined by the investigator.
Comment:	Target Species of Antibody: Human
Restrictions:	For Research Use only

Handling

Format:	Lyophilized
Reconstitution:	Distilled water
Concentration:	Lot specific
Buffer:	Lyophilized from PBS
Storage:	4 °C, -20 °C
Storage Comment:	Long term: -20°C, the use of 50% glycerol is recommended if storing aliquots in -20°C for long term use (up to 1 year) Short term (less than 1 week): 4°C. Avoid freeze-thaw cycles.



Host: Rabbit
Target Name: YIF1A
Sample Tissue: Jurkat Cell Lysate
Antibody Dilution: 1.0µg/ml

Image 1.