



Datasheet for ABIN6750083 **anti-ACYP1 antibody (AA 36-85)**



[Go to Product page](#)

1 Image

Overview

Quantity:	100 µL
Target:	ACYP1 (Acyp1)
Binding Specificity:	AA 36-85
Reactivity:	Human, Mouse, Rabbit, Pig, Monkey
Host:	Rabbit
Clonality:	Polyclonal
Conjugate:	This ACYP1 antibody is un-conjugated
Application:	Western Blotting (WB)

Product Details

Immunogen:	Synthetic peptide located between aa36-85 of human ACYP1 (P07311, NP_001098). Percent identity by BLAST analysis: Human, Chimpanzee, Orangutan, Gibbon, Monkey, Marmoset, Mouse, Rabbit, Pig (100%), Rat, Elephant, Panda, Dog, Bovine, Bat, Horse (92%), Galago, Guinea pig (84%). Type of Immunogen: Synthetic peptide
Specificity:	Human ACYP1
Predicted Reactivity:	Percent identity by BLAST analysis: Human, Mouse, Pig (100%) Rat, Bovine (92%).
Purification:	Immunoaffinity purified

Target Details

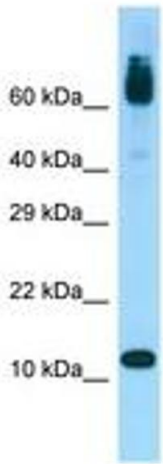
Target:	ACYP1 (Acyp1)
Alternative Name:	ACYP1 (Acyp1 Products)
Background:	Name/Gene ID: ACYP1 Synonyms: ACYP1, Acylphosphatase-1, ACYPE
Gene ID:	97
NCBI Accession:	NP_001098
UniProt:	P07311

Application Details

Application Notes:	Optimal working dilution should be determined by the investigator.
Comment:	Target Species of Antibody: Human
Restrictions:	For Research Use only

Handling

Format:	Lyophilized
Reconstitution:	Distilled water
Concentration:	Lot specific
Buffer:	Lyophilized from PBS
Storage:	4 °C,-20 °C
Storage Comment:	Long term: -20°C, the use of 50% glycerol is recommended if storing aliquots in -20°C for long term use (up to 1 year) Short term (less than 1 week): 4°C. Avoid freeze-thaw cycles.



Host: Rabbit
Target Name: ACYP1
Sample Tissue: Fetal Heart Lysate
Antibody Dilution: 1.0µg/ml

Image 1.