



[Go to Product page](#)

Datasheet for ABIN6750089
anti-C20orf7 antibody (AA 43-92)

1 Image

Overview

Quantity:	100 µL
Target:	C20orf7
Binding Specificity:	AA 43-92
Reactivity:	Human, Monkey
Host:	Rabbit
Clonality:	Polyclonal
Conjugate:	This C20orf7 antibody is un-conjugated
Application:	Western Blotting (WB)

Product Details

Immunogen:	Synthetic peptide located between aa43-92 of human NDUFAF5 (Q5TEU4, NP_077025). Percent identity by BLAST analysis: Human, Chimpanzee, Gorilla, Orangutan, Gibbon, Monkey, Marmoset (100%), Galago, Bovine, Rabbit, Pig (92%), Panda, Dog, Bat (85%), Elephant, Guinea pig (84%). Type of Immunogen: Synthetic peptide
Specificity:	Human NDUFAF5
Predicted Reactivity:	Percent identity by BLAST analysis: Human (100%) Bovine (92%) Panda (85%).
Purification:	Immunoaffinity purified

Target Details

Target: C20orf7

Alternative Name: NDUFAF5 ([C20orf7 Products](#))

Background: Name/Gene ID: NDUFAF5

Synonyms: NDUFAF5, BA526K24.2, C20orf7, DJ842G6.1

Gene ID: 79133

NCBI Accession: [NP_077025](#)

UniProt: [Q5TEU4](#)

Application Details

Application Notes: Optimal working dilution should be determined by the investigator.

Comment: Target Species of Antibody: Human

Restrictions: For Research Use only

Handling

Format: Lyophilized

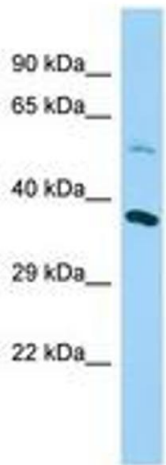
Reconstitution: Distilled water

Concentration: Lot specific

Buffer: Lyophilized from PBS

Storage: 4 °C, -20 °C

Storage Comment: Long term: -20°C, the use of 50% glycerol is recommended if storing aliquots in -20°C for long term use (up to 1 year)
Short term (less than 1 week): 4°C. Avoid freeze-thaw cycles.



Host: Rabbit
Target Name: NDUFAF5
Sample Tissue: Fetal Heart Lysate
Antibody Dilution: 1.0µg/ml

Image 1.