



[Go to Product page](#)

Datasheet for ABIN6750098
anti-FKBP9 antibody (C-Term)

1 Image

Overview

Quantity:	100 µL
Target:	FKBP9
Binding Specificity:	C-Term
Reactivity:	Human, Mouse, Rabbit, Dog, Horse, Monkey, Bat
Host:	Rabbit
Clonality:	Polyclonal
Conjugate:	This FKBP9 antibody is un-conjugated
Application:	Western Blotting (WB)

Product Details

Immunogen:	Synthetic peptide from C-Terminus of human FKBP9 (O95302, NP_009201). Percent identity by BLAST analysis: Human, Chimpanzee, Gorilla, Orangutan, Gibbon, Monkey, Galago, Marmoset, Mouse, Panda, Dog, Bat, Rabbit, Horse (100%), Rat, Elephant, Bovine, Guinea pig, Platypus (92%), Turkey, Zebra finch, Chicken (87%), Opossum (85%), Xenopus (81%), Lizard (80%). Type of Immunogen: Synthetic peptide
Specificity:	Human FKBP9
Predicted Reactivity:	Percent identity by BLAST analysis: Human, Mouse (100%) Rat, Bovine (92%) Chicken (87%).
Purification:	Immunoaffinity purified

Target Details

Target:	FKBP9
Alternative Name:	FKBP9 (FKBP9 Products)
Background:	Name/Gene ID: FKBP9 Synonyms: FKBP9, 63 kDa FKBP, 63 kDa FK506-binding protein, FK506-binding protein 9, FKBP-9, FKBP60, FKBP-63, FKBP63, Rotamase, PPIase, PPIase FKBP9
Gene ID:	11328
NCBI Accession:	NP_009201
UniProt:	O95302

Application Details

Application Notes:	Optimal working dilution should be determined by the investigator.
Comment:	Target Species of Antibody: Human
Restrictions:	For Research Use only

Handling

Format:	Lyophilized
Reconstitution:	Distilled water
Concentration:	Lot specific
Buffer:	Lyophilized from PBS
Storage:	4 °C, -20 °C
Storage Comment:	Long term: -20°C, the use of 50% glycerol is recommended if storing aliquots in -20°C for long term use (up to 1 year) Short term (less than 1 week): 4°C. Avoid freeze-thaw cycles.

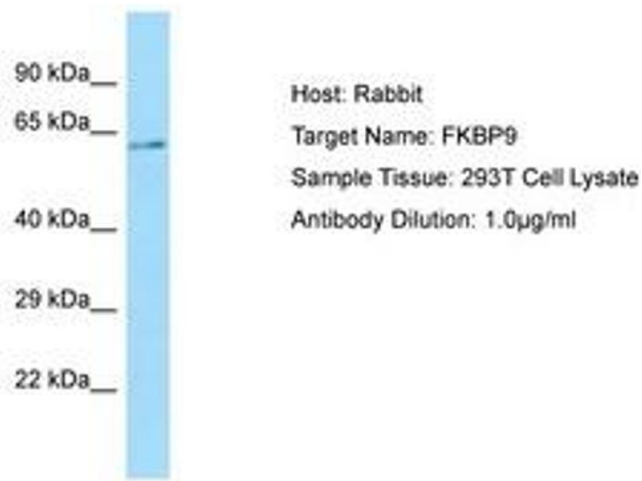


Image 1.