

Datasheet for ABIN6750108
anti-INTU antibody (AA 816-865)



[Go to Product page](#)

1 Image

Overview

Quantity:	100 µL
Target:	INTU
Binding Specificity:	AA 816-865
Reactivity:	Human
Host:	Rabbit
Clonality:	Polyclonal
Conjugate:	This INTU antibody is un-conjugated
Application:	Western Blotting (WB)

Product Details

Immunogen:	Synthetic peptide located between aa816-865 of human INTU (Q9ULD6, NP_056508). Percent identity by BLAST analysis: Human, Chimpanzee, Gorilla, Orangutan, Gibbon (100%), Marmoset (92%), Panda (85%). Type of Immunogen: Synthetic peptide
Specificity:	Human INTU
Predicted Reactivity:	Percent identity by BLAST analysis: Human (100%).
Purification:	Immunoaffinity purified

Target Details

Target:	INTU
---------	------

Target Details

Alternative Name: [INTU \(INTU Products\)](#)

Background: Name/Gene ID: INTU

Synonyms: INTU, Homolog of inturned, KIAA1284, PDZK6, PDZD6, PDZ domain containing 6, INT, Protein inturned

Gene ID: 27152

NCBI Accession: [NP_056508](#)

UniProt: [Q9ULD6](#)

Application Details

Application Notes: Optimal working dilution should be determined by the investigator.

Comment: Target Species of Antibody: Human

Restrictions: For Research Use only

Handling

Format: Lyophilized

Reconstitution: Distilled water

Concentration: Lot specific

Buffer: Lyophilized from PBS

Storage: 4 °C, -20 °C

Storage Comment: Long term: -20°C, the use of 50% glycerol is recommended if storing aliquots in -20°C for long term use (up to 1 year)

Short term (less than 1 week): 4°C. Avoid freeze-thaw cycles.

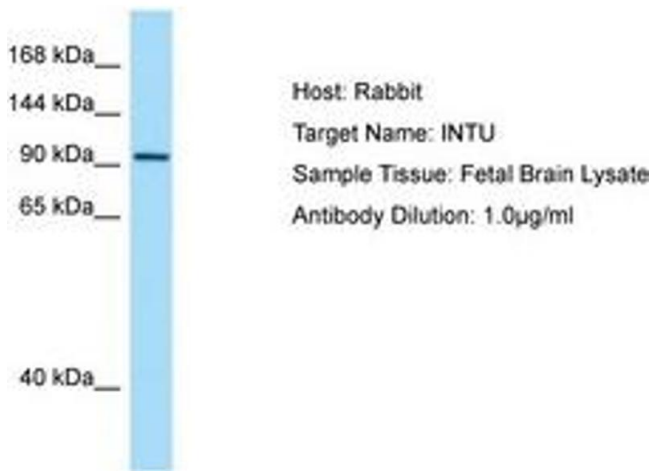


Image 1.