



[Go to Product page](#)

Datasheet for ABIN6750109
anti-ISOC1 antibody (C-Term)

1 Image

Overview

Quantity:	100 µL
Target:	ISOC1
Binding Specificity:	C-Term
Reactivity:	Human, Mouse, Cow, Rabbit, Dog, Rat, Guinea Pig, Horse, Monkey, Pig, Xenopus laevis
Host:	Rabbit
Clonality:	Polyclonal
Conjugate:	This ISOC1 antibody is un-conjugated
Application:	Western Blotting (WB)

Product Details

Immunogen:	Synthetic peptide from C-Terminus of human ISOC1 (Q96CN7, NP_057132). Percent identity by BLAST analysis: Human, Chimpanzee, Gorilla, Orangutan, Gibbon, Monkey, Galago, Marmoset, Mouse, Rat, Panda, Dog, Bovine, Rabbit, Horse, Pig, Opossum, Guinea pig, Xenopus (100%), Elephant, Bat, Turkey, Zebra finch, Chicken, Lizard, Zebrafish (92%), Salmon (85%). Type of Immunogen: Synthetic peptide
Specificity:	Human ISOC1
Predicted Reactivity:	Percent identity by BLAST analysis: Human, Mouse, Rat, Bovine, Xenopus (100%) Zebrafish (92%) Salmon (85%).
Purification:	Immunoaffinity purified

Target Details

Target:	ISOC1
Alternative Name:	ISOC1 (ISOC1 Products)
Background:	Name/Gene ID: ISOC1 Synonyms: ISOC1, CGI-111
Gene ID:	51015
NCBI Accession:	NP_057132
UniProt:	Q96CN7

Application Details

Application Notes:	Optimal working dilution should be determined by the investigator.
Comment:	Target Species of Antibody: Human
Restrictions:	For Research Use only

Handling

Format:	Lyophilized
Reconstitution:	Distilled water
Concentration:	Lot specific
Buffer:	Lyophilized from PBS
Storage:	4 °C,-20 °C
Storage Comment:	Long term: -20°C, the use of 50% glycerol is recommended if storing aliquots in -20°C for long term use (up to 1 year) Short term (less than 1 week): 4°C. Avoid freeze-thaw cycles.

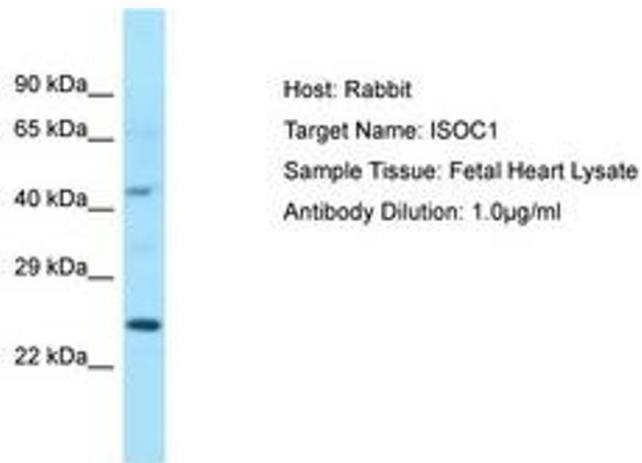


Image 1.