



Datasheet for ABIN6750111
anti-KPNA7 antibody (AA 424-473)



[Go to Product page](#)

1 Image

Overview

Quantity:	100 µL
Target:	KPNA7
Binding Specificity:	AA 424-473
Reactivity:	Human
Host:	Rabbit
Clonality:	Polyclonal
Conjugate:	This KPNA7 antibody is un-conjugated
Application:	Western Blotting (WB)

Product Details

Immunogen: Synthetic peptide located between aa424-473 of human KPNA7 (A9QM74, NP_001139187).
Percent identity by BLAST analysis: Human, Chimpanzee, Orangutan, Gibbon (100%), Gorilla, Panda, Dog (92%), Monkey (85%).

Type of Immunogen: Synthetic peptide

Specificity:	Human KPNA7
Predicted Reactivity:	Percent identity by BLAST analysis: Human (100%).
Purification:	Immunoaffinity purified

Target Details

Target:	KPNA7
---------	-------

Target Details

Alternative Name: [KPNA7 \(KPNA7 Products\)](#)

Background: Name/Gene ID: KPNA7

Synonyms: KPNA7, Importin subunit alpha-8, Karyopherin subunit alpha-7, Karyopherin 7

Gene ID: 402569

NCBI Accession: [NP_001139187](#)

UniProt: [A9QM74](#)

Pathways: [Protein targeting to Nucleus](#)

Application Details

Application Notes: Optimal working dilution should be determined by the investigator.

Comment: Target Species of Antibody: Human

Restrictions: For Research Use only

Handling

Format: Lyophilized

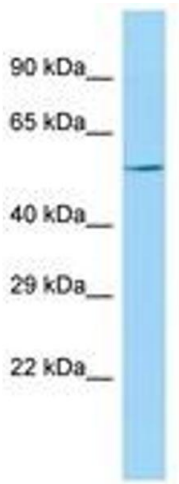
Reconstitution: Distilled water

Concentration: Lot specific

Buffer: Lyophilized from PBS

Storage: 4 °C, -20 °C

Storage Comment: Long term: -20°C, the use of 50% glycerol is recommended if storing aliquots in -20°C for long term use (up to 1 year)
Short term (less than 1 week): 4°C. Avoid freeze-thaw cycles.



Host: Rabbit
Target Name: KPNA7
Sample Tissue: U937 Cell Lysate
Antibody Dilution: 1.0µg/ml

Image 1.