



[Go to Product page](#)

Datasheet for ABIN6750118
anti-MTERFD3 antibody (AA 110-159)

1 Image

Overview

Quantity:	100 µL
Target:	MTERFD3
Binding Specificity:	AA 110-159
Reactivity:	Human, Rat
Host:	Rabbit
Clonality:	Polyclonal
Conjugate:	This MTERFD3 antibody is un-conjugated
Application:	Western Blotting (WB)

Product Details

Immunogen:	Synthetic peptide located between aa110-159 of human MTERFD3 (Q49AM1, NP_079474). Percent identity by BLAST analysis: Human, Chimpanzee, Gorilla, Orangutan, Gibbon, Rat (100%), Marmoset, Dog, Pig (92%), Mouse, Elephant, Panda, Bovine, Bat, Horse, Opossum (85%), Rabbit (84%). Type of Immunogen: Synthetic peptide
Specificity:	Human MTERFD3
Predicted Reactivity:	Percent identity by BLAST analysis: Human (100%) Mouse, Rat, Panda, Bovine (85%).
Purification:	Immunoaffinity purified

Target Details

Target: MTERFD3

Alternative Name: MTERFD3 ([MTERFD3 Products](#))

Background: Name/Gene ID: MTERF2

Synonyms: MTERF2, MTERFD3, MTERF domain containing 3, MTERFL

Gene ID: 80298

NCBI Accession: [NP_079474](#)

UniProt: [Q49AM1](#)

Application Details

Application Notes: Optimal working dilution should be determined by the investigator.

Comment: Target Species of Antibody: Human

Restrictions: For Research Use only

Handling

Format: Lyophilized

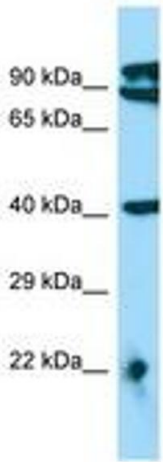
Reconstitution: Distilled water

Concentration: Lot specific

Buffer: Lyophilized from PBS

Storage: 4 °C, -20 °C

Storage Comment: Long term: -20°C, the use of 50% glycerol is recommended if storing aliquots in -20°C for long term use (up to 1 year)
Short term (less than 1 week): 4°C. Avoid freeze-thaw cycles.



Host: Rabbit
Target Name: MTERFD3
Sample Tissue: HepG2 Cell Lysate
Antibody Dilution: 1.0µg/ml

Image 1.