



[Go to Product page](#)

Datasheet for ABIN6750125
anti-P4HA3 antibody (AA 77-126)

1 Image

Overview

Quantity:	100 µL
Target:	P4HA3
Binding Specificity:	AA 77-126
Reactivity:	Human, Mouse, Rat, Pig, Dog, Monkey
Host:	Rabbit
Clonality:	Polyclonal
Conjugate:	This P4HA3 antibody is un-conjugated
Application:	Western Blotting (WB)

Product Details

Immunogen:	Synthetic peptide located between aa77-126 of human P4HA3 (Q7Z4N8, NP_878907). Percent identity by BLAST analysis: Human, Chimpanzee, Gorilla, Orangutan, Gibbon, Monkey, Marmoset, Mouse, Rat, Dog, Pig (100%), Galago, Panda, Bovine, Bat, Horse, Opossum (92%), Elephant (91%), Guinea pig (85%). Type of Immunogen: Synthetic peptide
Specificity:	Human P4HA3
Predicted Reactivity:	Percent identity by BLAST analysis: Human, Mouse (100%) Rat, Bovine (92%).
Purification:	Immunoaffinity purified

Target Details

Target: P4HA3

Alternative Name: P4HA3 ([P4HA3 Products](#))

Background: Name/Gene ID: P4HA3

Synonyms: P4HA3, 4-PH alpha-3, C-P4H alpha III, C-P4HalpHa(III), p4HA3

Gene ID: 283208

NCBI Accession: [NP_878907](#)

UniProt: [Q7Z4N8](#)

Application Details

Application Notes: Optimal working dilution should be determined by the investigator.

Comment: Target Species of Antibody: Human

Restrictions: For Research Use only

Handling

Format: Lyophilized

Reconstitution: Distilled water

Concentration: Lot specific

Buffer: Lyophilized from PBS

Storage: 4 °C, -20 °C

Storage Comment: Long term: -20°C, the use of 50% glycerol is recommended if storing aliquots in -20°C for long term use (up to 1 year)
Short term (less than 1 week): 4°C. Avoid freeze-thaw cycles.

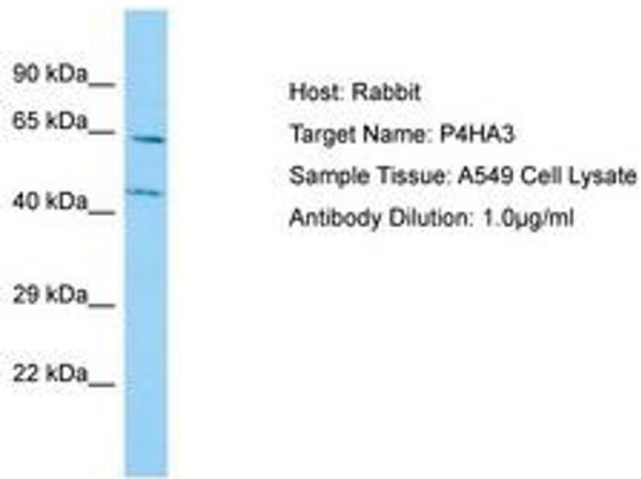


Image 1.