



[Go to Product page](#)

Datasheet for ABIN6750129
anti-PPFIBP2 antibody (AA 760-809)

1 Image

Overview

Quantity:	100 µL
Target:	PPFIBP2
Binding Specificity:	AA 760-809
Reactivity:	Human, Dog
Host:	Rabbit
Clonality:	Polyclonal
Conjugate:	This PPFIBP2 antibody is un-conjugated
Application:	Western Blotting (WB)

Product Details

Immunogen:	Synthetic peptide located between aa760-809 of human PPFIBP2 (Q8ND30, NP_003612). Percent identity by BLAST analysis: Human, Chimpanzee, Gorilla, Orangutan, Monkey, Elephant, Panda, Dog (100%), Gibbon, Galago, Mouse, Rat, Bovine, Bat, Rabbit, Horse, Guinea pig (92%), Marmoset (91%), Pig (85%). Type of Immunogen: Synthetic peptide
Specificity:	Human PPFIBP2
Predicted Reactivity:	Percent identity by BLAST analysis: Human (100%) Mouse, Rat (92%).
Purification:	Immunoaffinity purified

Target Details

Target:	PPFIBP2
Alternative Name:	PPFIBP2 (PPFIBP2 Products)
Background:	Name/Gene ID: PPFIBP2 Synonyms: PPFIBP2, Cclp1, Liprin-beta-2
Gene ID:	8495
NCBI Accession:	NP_003612
UniProt:	Q8ND30

Application Details

Application Notes:	Optimal working dilution should be determined by the investigator.
Comment:	Target Species of Antibody: Human
Restrictions:	For Research Use only

Handling

Format:	Lyophilized
Reconstitution:	Distilled water
Concentration:	Lot specific
Buffer:	Lyophilized from PBS
Storage:	4 °C,-20 °C
Storage Comment:	Long term: -20°C, the use of 50% glycerol is recommended if storing aliquots in -20°C for long term use (up to 1 year) Short term (less than 1 week): 4°C. Avoid freeze-thaw cycles.

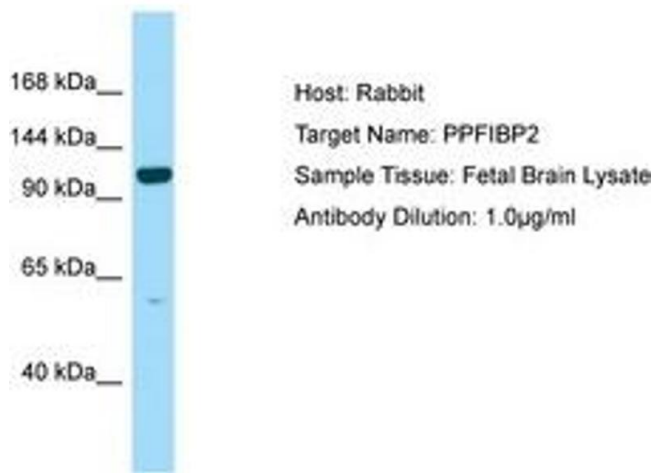


Image 1.