



[Go to Product page](#)

Datasheet for ABIN6750130  
**anti-PPP1R9A antibody (C-Term)**

1 Image

Overview

Quantity:	100 µL
Target:	PPP1R9A
Binding Specificity:	C-Term
Reactivity:	Human, Rat, Mouse, Cow, Dog, Horse, Rabbit, Monkey
Host:	Rabbit
Clonality:	Polyclonal
Conjugate:	This PPP1R9A antibody is un-conjugated
Application:	Western Blotting (WB)

Product Details

Immunogen:	Synthetic peptide from C-Terminus of human PPP1R9A (F8W7J9, NP_001159633). Percent identity by BLAST analysis: Human, Gorilla, Orangutan, Gibbon, Monkey, Marmoset, Mouse, Rat, Dog, Bovine, Rabbit, Horse (100%), Elephant, Bat, Guinea pig, Turkey, Chicken (92%), Galago (91%), Zebra finch (84%).  Type of Immunogen: Synthetic peptide
Specificity:	Human PPP1R9A
Predicted Reactivity:	Percent identity by BLAST analysis: Human, Mouse, Rat (100%).
Purification:	Immunoaffinity purified

## Target Details

---

Target: PPP1R9A

Alternative Name: PPP1R9A / Neurabin 1 ([PPP1R9A Products](#))

Background: Name/Gene ID: PPP1R9A

Synonyms: PPP1R9A, NRB1, NRBI, Neurabin-1, Neurabin-I, KIAA1222

Gene ID: 55607

NCBI Accession: [NP\\_001159633](#)

UniProt: [Q9ULJ8](#)

## Application Details

---

Application Notes: Optimal working dilution should be determined by the investigator.

Comment: Target Species of Antibody: Human

Restrictions: For Research Use only

## Handling

---

Format: Lyophilized

Reconstitution: Distilled water

Concentration: Lot specific

Buffer: Lyophilized from PBS

Storage: 4 °C, -20 °C

Storage Comment: Long term: -20°C, the use of 50% glycerol is recommended if storing aliquots in -20°C for long term use (up to 1 year)  
Short term (less than 1 week): 4°C. Avoid freeze-thaw cycles.

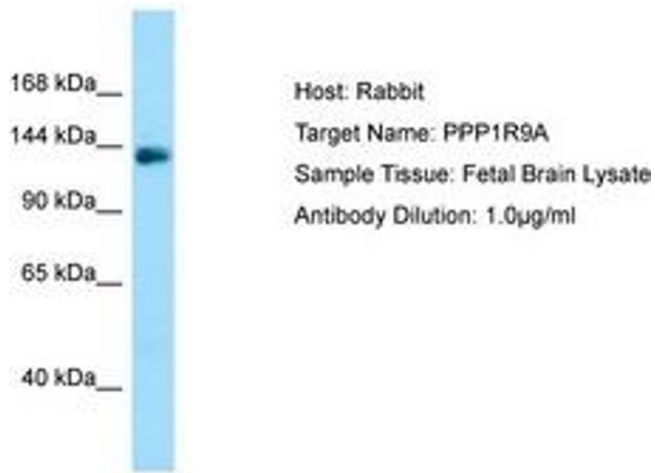


Image 1.