



[Go to Product page](#)

Datasheet for ABIN6750133
anti-SCAMP4 antibody (C-Term)

1 Image

Overview

Quantity:	100 µL
Target:	SCAMP4
Binding Specificity:	C-Term
Reactivity:	Human, Dog, Horse, Pig, Chicken, Monkey
Host:	Rabbit
Clonality:	Polyclonal
Conjugate:	This SCAMP4 antibody is un-conjugated
Application:	Western Blotting (WB)

Product Details

Immunogen:	Synthetic peptide from C-Terminus of human SCAMP4 (Q969E2, NP_524558). Percent identity by BLAST analysis: Human, Chimpanzee, Gorilla, Orangutan, Gibbon, Monkey, Galago, Marmoset, Elephant, Panda, Dog, Horse, Pig, Chicken (100%), Bovine, Opossum, Zebra finch (92%), Mouse, Rat, Guinea pig (85%). Type of Immunogen: Synthetic peptide
Specificity:	Human SCAMP4
Predicted Reactivity:	Percent identity by BLAST analysis: Human (100%) Bovine (92%) Mouse, Rat (85%).
Purification:	Immunoaffinity purified

Target Details

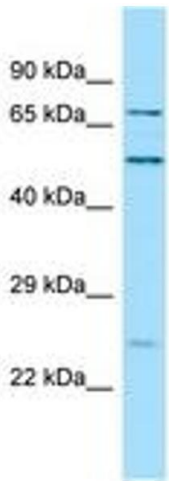
Target:	SCAMP4
Alternative Name:	SCAMP4 (SCAMP4 Products)
Background:	Name/Gene ID: SCAMP4 Synonyms: SCAMP4, SCAMP-4
Gene ID:	113178
NCBI Accession:	NP_524558
UniProt:	Q969E2

Application Details

Application Notes:	Optimal working dilution should be determined by the investigator.
Comment:	Target Species of Antibody: Human
Restrictions:	For Research Use only

Handling

Format:	Lyophilized
Reconstitution:	Distilled water
Concentration:	Lot specific
Buffer:	Lyophilized from PBS
Storage:	4 °C,-20 °C
Storage Comment:	Long term: -20°C, the use of 50% glycerol is recommended if storing aliquots in -20°C for long term use (up to 1 year) Short term (less than 1 week): 4°C. Avoid freeze-thaw cycles.



Host: Rabbit
Target Name: SCAMP4
Sample Tissue: HeLa Cell Lysate
Antibody Dilution: 1.0µg/ml

Image 1.