



Datasheet for ABIN6750147  
**anti-ACTR6 antibody (AA 243-292)**



[Go to Product page](#)

1 Image

Overview

Quantity:	100 µL
Target:	ACTR6
Binding Specificity:	AA 243-292
Reactivity:	Human, Mouse, Rat, Cow, Dog, Horse, Pig, Rabbit, Bat, Monkey
Host:	Rabbit
Clonality:	Polyclonal
Conjugate:	This ACTR6 antibody is un-conjugated
Application:	Western Blotting (WB)

Product Details

Immunogen:	Synthetic peptide located between aa243-292 of human ACTR6 (Q9GZN1, NP_071941). Percent identity by BLAST analysis: Human, Chimpanzee, Gorilla, Orangutan, Gibbon, Monkey, Galago, Marmoset, Mouse, Rat, Elephant, Panda, Dog, Bovine, Bat, Rabbit, Horse, Pig, Opossum (100%), Turkey, Zebra finch, Chicken, Lizard (92%), Guinea pig, Medaka, Pufferfish (85%).  Type of Immunogen: Synthetic peptide
Specificity:	Human ACTR6
Predicted Reactivity:	Percent identity by BLAST analysis: Human, Mouse, Rat, Bovine (100%) Chicken (92%).
Purification:	Immunoaffinity purified

## Target Details

---

Target:	ACTR6
Alternative Name:	ACTR6 ( <a href="#">ACTR6 Products</a> )
Background:	Name/Gene ID: ACTR6  Synonyms: ACTR6, Actin-related protein 6, CDA12, HARPX, HARP6, HSPC281, ARP6, MSTP136
Gene ID:	64431
NCBI Accession:	<a href="#">NP_071941</a>
UniProt:	<a href="#">Q9GZN1</a>

## Application Details

---

Application Notes:	Optimal working dilution should be determined by the investigator.
Comment:	Target Species of Antibody: Human
Restrictions:	For Research Use only

## Handling

---

Format:	Lyophilized
Reconstitution:	Distilled water
Concentration:	Lot specific
Buffer:	Lyophilized from PBS
Storage:	4 °C,-20 °C
Storage Comment:	Long term: -20°C, the use of 50% glycerol is recommended if storing aliquots in -20°C for long term use (up to 1 year)  Short term (less than 1 week): 4°C. Avoid freeze-thaw cycles.

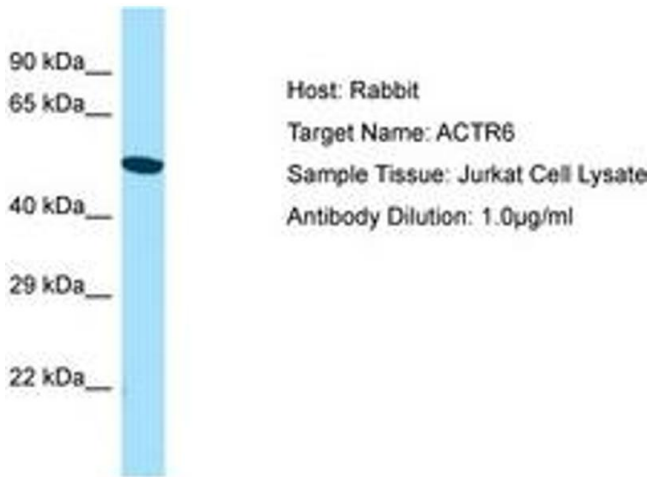


Image 1.