



Datasheet for ABIN6750150
anti-SLC35G3 antibody (AA 22-71)



[Go to Product page](#)

1 Image

Overview

Quantity:	100 µL
Target:	SLC35G3
Binding Specificity:	AA 22-71
Reactivity:	Human
Host:	Rabbit
Clonality:	Polyclonal
Conjugate:	This SLC35G3 antibody is un-conjugated
Application:	Western Blotting (WB)

Product Details

Immunogen:	Synthetic peptide located between aa22-71 of human SLC35G3 (Q8N808, NP_689675). Percent identity by BLAST analysis: Human, Chimpanzee (100%), Monkey (90%), Gorilla (85%). Type of Immunogen: Synthetic peptide
Specificity:	Human SLC35G3
Predicted Reactivity:	Percent identity by BLAST analysis: Human (100%) Chimpanzee, Gorilla (85%).
Purification:	Immunoaffinity purified

Target Details

Target:	SLC35G3
Alternative Name:	SLC35G3 (SLC35G3 Products)

Target Details

Background: Name/Gene ID: SLC35G3

Synonyms: SLC35G3, AMAC1, Protein AMAC1, TMEM21A, Transmembrane protein 21A

Gene ID: 146861

NCBI Accession: [NP_689675](#)

UniProt: [Q8N808](#)

Application Details

Application Notes: Optimal working dilution should be determined by the investigator.

Comment: Target Species of Antibody: Human

Restrictions: For Research Use only

Handling

Format: Lyophilized

Reconstitution: Distilled water

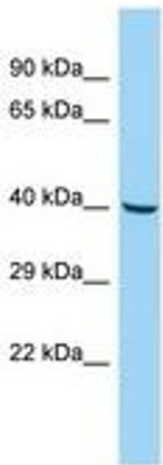
Concentration: Lot specific

Buffer: Lyophilized from PBS

Storage: 4 °C, -20 °C

Storage Comment: Long term: -20°C, the use of 50% glycerol is recommended if storing aliquots in -20°C for long term use (up to 1 year)

Short term (less than 1 week): 4°C. Avoid freeze-thaw cycles.



Host: Rabbit
Target Name: SLC35G3
Sample Tissue: Fetal Liver Lysate
Antibody Dilution: 1.0µg/ml

Image 1.