



[Go to Product page](#)

Datasheet for ABIN6750156  
**anti-ARL6IP4 antibody (AA 198-247)**

1 Image

Overview

Quantity:	100 µL
Target:	ARL6IP4
Binding Specificity:	AA 198-247
Reactivity:	Human, Monkey
Host:	Rabbit
Clonality:	Polyclonal
Conjugate:	This ARL6IP4 antibody is un-conjugated
Application:	Western Blotting (WB)

Product Details

Immunogen:	Synthetic peptide located between aa198-247 of human ARL6IP4 (Q66PJ3, NP_001002252). Percent identity by BLAST analysis: Human, Chimpanzee, Orangutan, Gibbon, Marmoset (100%), Panda, Dog, Horse (84%).  Type of Immunogen: Synthetic peptide
Specificity:	Human ARL6IP4
Predicted Reactivity:	Percent identity by BLAST analysis: Human (100%).
Purification:	Immunoaffinity purified

Target Details

Target:	ARL6IP4
---------	---------

## Target Details

---

Alternative Name: [ARL6IP4 \(ARL6IP4 Products\)](#)

Background: Name/Gene ID: ARL6IP4

Synonyms: ARL6IP4, Aip-4, ARL-6-interacting protein 4, HSP-975, HSVI binding protein, HSVI-binding protein, Splicing regulator SRp38, SRp25 nuclear protein, SRp25, SR-15, SFRS20, SR-25, SRp37

Gene ID: 51329

NCBI Accession: [NP\\_001002252](#)

UniProt: [Q66PJ3](#)

## Application Details

---

Application Notes: Optimal working dilution should be determined by the investigator.

Comment: Target Species of Antibody: Human

Restrictions: For Research Use only

## Handling

---

Format: Lyophilized

Reconstitution: Distilled water

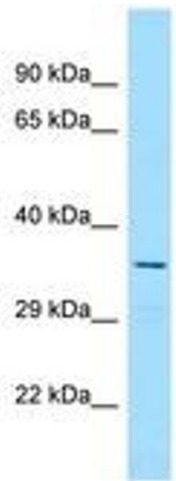
Concentration: Lot specific

Buffer: Lyophilized from PBS

Storage: 4 °C,-20 °C

Storage Comment: Long term: -20°C, the use of 50% glycerol is recommended if storing aliquots in -20°C for long term use (up to 1 year)

Short term (less than 1 week): 4°C. Avoid freeze-thaw cycles.



Host: Rabbit  
Target Name: ARL6IP4  
Sample Tissue: HeLa Cell Lysate  
Antibody Dilution: 1.0µg/ml

Image 1.