



## Datasheet for ABIN6750157 **anti-ASB14 antibody (AA 45-94)**



[Go to Product page](#)

### 1 Image

#### Overview

Quantity:	100 µL
Target:	ASB14
Binding Specificity:	AA 45-94
Reactivity:	Human
Host:	Rabbit
Clonality:	Polyclonal
Conjugate:	This ASB14 antibody is un-conjugated
Application:	Western Blotting (WB)

#### Product Details

Immunogen:	Synthetic peptide located between aa45-94 of human ASB14 (A6NK59, NP_569058). Percent identity by BLAST analysis: Human, Chimpanzee, Gorilla, Gibbon (100%), Orangutan, Panda, Dog, Bovine (92%), Monkey, Galago, Mouse, Bat, Rabbit, Guinea pig (85%), Rat (78%).  Type of Immunogen: Synthetic peptide
Specificity:	Human ASB14
Predicted Reactivity:	Percent identity by BLAST analysis: Human (100%) Bovine (92%) Mouse (85%).
Purification:	Immunoaffinity purified

#### Target Details

Target:	ASB14
---------	-------

## Target Details

---

Alternative Name: ASB14 ([ASB14 Products](#))

Background: Name/Gene ID: ASB14

Synonyms: ASB14, ASB-14

Gene ID: 142686

NCBI Accession: [NP\\_569058](#)

UniProt: [A6NK59](#)

## Application Details

---

Application Notes: Optimal working dilution should be determined by the investigator.

Comment: Target Species of Antibody: Human

Restrictions: For Research Use only

## Handling

---

Format: Lyophilized

Reconstitution: Distilled water

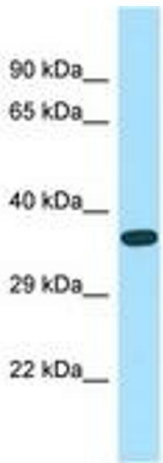
Concentration: Lot specific

Buffer: Lyophilized from PBS

Storage: 4 °C, -20 °C

Storage Comment: Long term: -20°C, the use of 50% glycerol is recommended if storing aliquots in -20°C for long term use (up to 1 year)

Short term (less than 1 week): 4°C. Avoid freeze-thaw cycles.



Host: Rabbit  
Target Name: ASB14  
Sample Tissue: Fetal Heart Lysate  
Antibody Dilution: 1.0µg/ml

Image 1.