



[Go to Product page](#)

Datasheet for ABIN6750166  
**anti-CCDC59 antibody (AA 132-181)**

1 Image

Overview

Quantity:	100 µL
Target:	CCDC59
Binding Specificity:	AA 132-181
Reactivity:	Human, Mouse, Rat, Cow, Horse, Pig, Rabbit, Bat, Monkey
Host:	Rabbit
Clonality:	Polyclonal
Conjugate:	This CCDC59 antibody is un-conjugated
Application:	Western Blotting (WB)

Product Details

Immunogen:	Synthetic peptide located between aa132-181 of human CCDC59 (Q9P031, NP_054886). Percent identity by BLAST analysis: Human, Chimpanzee, Gorilla, Orangutan, Gibbon, Monkey, Galago, Marmoset, Mouse, Rat, Elephant, Panda, Bovine, Bat, Rabbit, Horse, Pig (100%), Opossum, Guinea pig, Turkey, Chicken, Xenopus (92%), Dog, Zebra finch, Platypus (85%).  Type of Immunogen: Synthetic peptide
Specificity:	Human CCDC59
Predicted Reactivity:	Percent identity by BLAST analysis: Human, Mouse, Rat, Bovine (100%).
Purification:	Immunoaffinity purified

## Target Details

---

Target:	CCDC59
Alternative Name:	CCDC59 ( <a href="#">CCDC59 Products</a> )
Background:	Name/Gene ID: CCDC59  Synonyms: CCDC59, BR22, HSPC128, TTF-1-associated protein BR2, TAP26, TTF-1-associated protein 26
Gene ID:	29080
NCBI Accession:	<a href="#">NP_054886</a>
UniProt:	<a href="#">Q9P031</a>

## Application Details

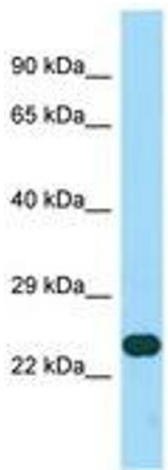
---

Application Notes:	Optimal working dilution should be determined by the investigator.
Comment:	Target Species of Antibody: Human
Restrictions:	For Research Use only

## Handling

---

Format:	Lyophilized
Reconstitution:	Distilled water
Concentration:	Lot specific
Buffer:	Lyophilized from PBS
Storage:	4 °C, -20 °C
Storage Comment:	Long term: -20°C, the use of 50% glycerol is recommended if storing aliquots in -20°C for long term use (up to 1 year) Short term (less than 1 week): 4°C. Avoid freeze-thaw cycles.



Host: Rabbit  
Target Name: CCDC59  
Sample Tissue: HepG2 Cell Lysate  
Antibody Dilution: 1.0µg/ml

Image 1.