



Datasheet for ABIN6750178 **anti-DNAH12 antibody (AA 26-75)**



[Go to Product page](#)

1 Image

Overview

Quantity:	100 µL
Target:	DNAH12
Binding Specificity:	AA 26-75
Reactivity:	Human, Monkey
Host:	Rabbit
Clonality:	Polyclonal
Conjugate:	This DNAH12 antibody is un-conjugated
Application:	Western Blotting (WB)

Product Details

Immunogen:	Synthetic peptide located between aa26-75 of human DNAH12 (NP_940966). Percent identity by BLAST analysis: Human, Chimpanzee, Gorilla, Orangutan, Gibbon, Monkey (100%), Mouse (92%), Rat (85%). Type of Immunogen: Synthetic peptide
Specificity:	Human DNAH12
Predicted Reactivity:	Percent identity by BLAST analysis: Human (100%) Mouse (92%) Rat (85%).
Purification:	Immunoaffinity purified

Target Details

Target:	DNAH12
---------	--------

Target Details

Alternative Name: [DNAH12 \(DNAH12 Products\)](#)

Background: Name/Gene ID: DNAH12

Synonyms: DNAH12, DLP12, DNAH7L, Ciliary dynein heavy chain 12, DNHD2, DHC3, DNAH12L, DNAHC3, Dynein, heavy chain-5, HL-19, HDHC3, DNAHC12, Dynein heavy chain domain 2, Dynein heavy domain 2, HL19

Gene ID: 201625

NCBI Accession: [NP_940966](#)

UniProt: [Q6ZR08](#)

Application Details

Application Notes: Optimal working dilution should be determined by the investigator.

Comment: Target Species of Antibody: Human

Restrictions: For Research Use only

Handling

Format: Lyophilized

Reconstitution: Distilled water

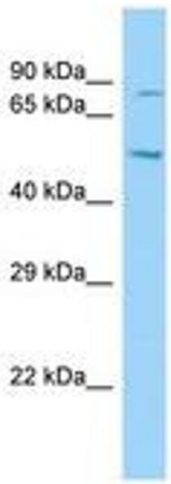
Concentration: Lot specific

Buffer: Lyophilized from PBS

Storage: 4 °C, -20 °C

Storage Comment: Long term: -20°C, the use of 50% glycerol is recommended if storing aliquots in -20°C for long term use (up to 1 year)

Short term (less than 1 week): 4°C. Avoid freeze-thaw cycles.



Host: Rabbit
Target Name: DNAH12
Sample Tissue: HeLa Cell Lysate
Antibody Dilution: 1.0µg/ml

Image 1.