



[Go to Product page](#)

Datasheet for ABIN6750182
anti-FAM50A antibody (C-Term)

1 Image

Overview

Quantity:	100 µL
Target:	FAM50A
Binding Specificity:	C-Term
Reactivity:	Human, Mouse, Rat, Cow, Dog, Horse, Pig, Rabbit, Zebrafish (Danio rerio), Bat, Monkey, Xenopus laevis
Host:	Rabbit
Clonality:	Polyclonal
Conjugate:	This FAM50A antibody is un-conjugated
Application:	Western Blotting (WB)

Product Details

Immunogen:	Synthetic peptide from C-Terminus of human FAM50A (Q14320, NP_004690). Percent identity by BLAST analysis: Human, Chimpanzee, Gorilla, Orangutan, Baboon, Monkey, Galago, Marmoset, Mouse, Rat, Panda, Dog, Bovine, Bat, Rabbit, Horse, Pig, Armadillo, Xenopus, Salmon, Smelt, Stickleback, Medaka, Zebrafish (100%), Gibbon, Elephant, Guinea pig, Platypus, Lizard, Pufferfish (92%). Type of Immunogen: Synthetic peptide
Specificity:	Human FAM50A
Predicted Reactivity:	Percent identity by BLAST analysis: Human, Baboon, Mouse, Rat, Panda, Armadillo, Xenopus, Salmon, Smelt, Zebrafish (100%) Monkey, Marmoset (92%).

Product Details

Purification: Immunoaffinity purified

Target Details

Target: FAM50A

Alternative Name: FAM50A ([FAM50A Products](#))

Background: Name/Gene ID: FAM50A

Synonyms: FAM50A, 9F, DXS9928E, HXC26, HXC-26, Protein HXC-26, XAP5, Protein FAM50A, Protein XAP-5

Gene ID: 9130

NCBI Accession: [NP_004690](#)

UniProt: [Q14320](#)

Application Details

Application Notes: Optimal working dilution should be determined by the investigator.

Comment: Target Species of Antibody: Human

Restrictions: For Research Use only

Handling

Format: Lyophilized

Reconstitution: Distilled water

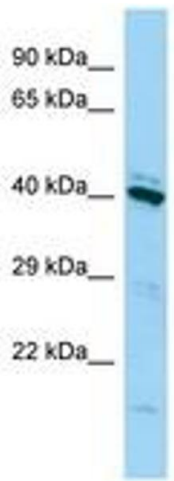
Concentration: Lot specific

Buffer: Lyophilized from PBS

Storage: 4 °C, -20 °C

Storage Comment: Long term: -20°C, the use of 50% glycerol is recommended if storing aliquots in -20°C for long term use (up to 1 year)

Short term (less than 1 week): 4°C. Avoid freeze-thaw cycles.



Host: Rabbit
Target Name: FAM50A
Sample Tissue: 293T Cell Lysate
Antibody Dilution: 1.0µg/ml

Image 1.