



[Go to Product page](#)

Datasheet for ABIN6750191  
**anti-HHIPL2 antibody (AA 606-655)**

1 Image

### Overview

Quantity:	100 µL
Target:	HHIPL2
Binding Specificity:	AA 606-655
Reactivity:	Human
Host:	Rabbit
Clonality:	Polyclonal
Conjugate:	This HHIPL2 antibody is un-conjugated
Application:	Western Blotting (WB)

### Product Details

Immunogen:	Synthetic peptide located between aa606-655 of human HHIPL2 (NP_079022). Percent identity by BLAST analysis: Human, Chimpanzee, Orangutan, Gibbon, Monkey (100%), Gorilla, Marmoset, Bovine (92%), Elephant, Panda, Dog (85%).  Type of Immunogen: Synthetic peptide
Specificity:	Human HHIPL2
Predicted Reactivity:	Percent identity by BLAST analysis: Human (100%) Panda (85%).
Purification:	Immunoaffinity purified

### Target Details

Target:	HHIPL2
---------	--------

## Target Details

---

Alternative Name:	HHIPL2 ( <a href="#">HHIPL2 Products</a> )
Background:	Name/Gene ID: HHIPL2  Synonyms: HHIPL2, HHIP-like 2, RP11-378J18.1, HHIP-like protein 2, HHIP3, KIAA1822-like, KIAA1822L
Gene ID:	79802
NCBI Accession:	<a href="#">NP_079022</a>
UniProt:	<a href="#">Q6UWX4</a>

## Application Details

---

Application Notes:	Optimal working dilution should be determined by the investigator.
Comment:	Target Species of Antibody: Human
Restrictions:	For Research Use only

## Handling

---

Format:	Lyophilized
Reconstitution:	Distilled water
Concentration:	Lot specific
Buffer:	Lyophilized from PBS
Storage:	4 °C,-20 °C
Storage Comment:	Long term: -20°C, the use of 50% glycerol is recommended if storing aliquots in -20°C for long term use (up to 1 year)  Short term (less than 1 week): 4°C. Avoid freeze-thaw cycles.

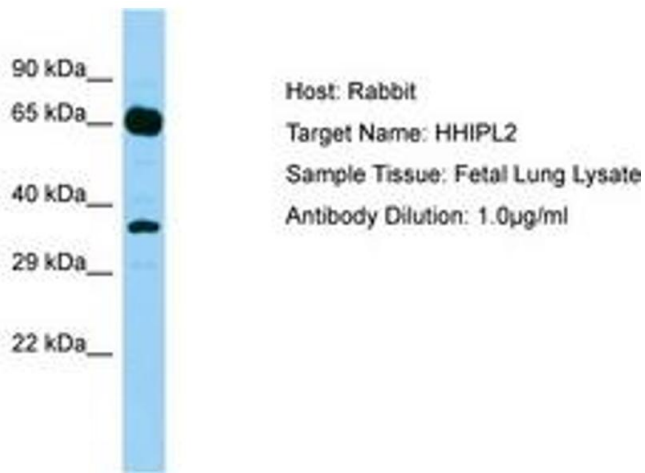


Image 1.