



Datasheet for ABIN6750207
anti-Keratin 31 antibody (AA 299-348)



[Go to Product page](#)

1 Image

Overview

Quantity:	100 µL
Target:	Keratin 31 (KRT31)
Binding Specificity:	AA 299-348
Reactivity:	Human, Horse, Sheep, Cow, Dog, Goat
Host:	Rabbit
Clonality:	Polyclonal
Conjugate:	This Keratin 31 antibody is un-conjugated
Application:	Western Blotting (WB)

Product Details

Immunogen:	Synthetic peptide located between aa299-348 of human KRT31 (Q15323, NP_002268). Percent identity by BLAST analysis: Human, Chimpanzee, Gorilla, Orangutan, Gibbon, Sheep, Goat, Elephant, Panda, Dog, Bovine, Horse (100%), Monkey, Marmoset, Mouse, Rat, Bat, Rabbit, Pig, Opossum, Guinea pig, Platypus (92%). Type of Immunogen: Synthetic peptide
Specificity:	Human KRT31 / HHA1
Predicted Reactivity:	Percent identity by BLAST analysis: Human, Chimpanzee, Bovine, Panda (100%) Mouse, Rat, Sheep (92%).
Purification:	Immunoaffinity purified

Target Details

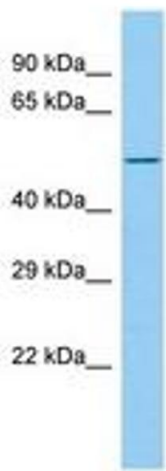
Target:	Keratin 31 (KRT31)
Alternative Name:	KRT31 / Keratin 31 / KRTHA1 (KRT31 Products)
Background:	Name/Gene ID: KRT31 Synonyms: KRT31, Hard keratin, type I, 1, HHa1, Ha-1, Hair keratin, type I Ha1, HKA1, Keratin-31, HA1, K31, Keratin, hair, acidic, 1, Keratin 31, Keratin, hair, acidic,1, Keratin, type I cuticular Ha1, KRTHA1
Gene ID:	3881
NCBI Accession:	NP_002268

Application Details

Application Notes:	Optimal working dilution should be determined by the investigator.
Comment:	Target Species of Antibody: Human
Restrictions:	For Research Use only

Handling

Format:	Lyophilized
Reconstitution:	Distilled water
Concentration:	Lot specific
Buffer:	Lyophilized from PBS
Handling Advice:	Avoid repeat freeze-thaw cycles.
Storage:	4 °C,-20 °C
Storage Comment:	Long term: -20°C, the use of 50% glycerol is recommended if storing aliquots in -20°C for long term use (up to 1 year) Short term (less than 1 week): 4°C. Avoid freeze-thaw cycles.



Host: Rabbit
Target Name: KRT31
Sample Tissue: 721_B Cell Lysate
Antibody Dilution: 1.0µg/ml

Image 1.