



[Go to Product page](#)

Datasheet for ABIN6750241
anti-KLHL26 antibody (AA 51-100)

1 Image

Overview

Quantity:	100 µL
Target:	KLHL26
Binding Specificity:	AA 51-100
Reactivity:	Human, Mouse
Host:	Rabbit
Clonality:	Polyclonal
Conjugate:	This KLHL26 antibody is un-conjugated
Application:	Western Blotting (WB)

Product Details

Immunogen:	Synthetic peptide located between aa51-100 of mouse Klhl26 (Q8BGY4, NP_848886). Percent identity by BLAST analysis: Mouse (100%). Type of Immunogen: Synthetic peptide
Specificity:	Mouse KLHL26
Purification:	Immunoaffinity purified

Target Details

Target:	KLHL26
Alternative Name:	KLHL26 (KLHL26 Products)
Background:	Name/Gene ID: KLHL26

Target Details

Synonyms: KLHL26, Kelch-like 26 (Drosophila), Kelch-like protein 26

Gene ID: 55295

NCBI Accession: [NP_848886](#)

UniProt: [Q53HC5](#)

Application Details

Application Notes: Optimal working dilution should be determined by the investigator.

Comment: Target Species of Antibody: Mouse

Restrictions: For Research Use only

Handling

Format: Lyophilized

Reconstitution: Distilled water

Concentration: Lot specific

Buffer: Lyophilized from PBS

Storage: 4 °C, -20 °C

Storage Comment: Long term: -20°C, the use of 50% glycerol is recommended if storing aliquots in -20°C for long term use (up to 1 year)
Short term (less than 1 week): 4°C. Avoid freeze-thaw cycles.

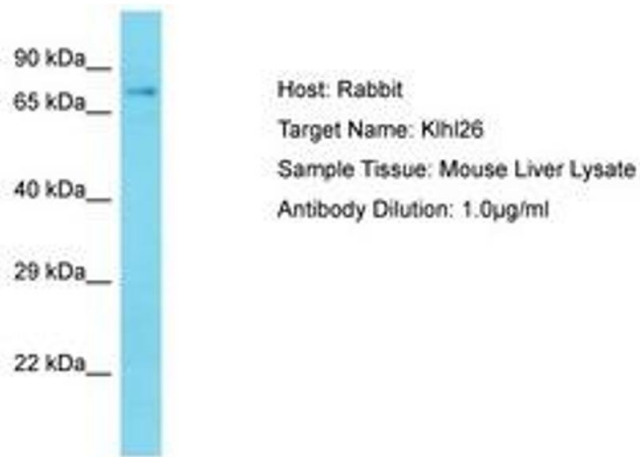


Image 1.