



[Go to Product page](#)

Datasheet for ABIN6750246  
**anti-DRGX antibody (AA 101-150)**

1 Image

Overview

Quantity:	100 µL
Target:	DRGX
Binding Specificity:	AA 101-150
Reactivity:	Human, Rat
Host:	Rabbit
Clonality:	Polyclonal
Conjugate:	This DRGX antibody is un-conjugated
Application:	Western Blotting (WB)

Product Details

Immunogen:	Synthetic peptide located between aa101-150 of rat Drgx (Q62798, NP_665710). Percent identity by BLAST analysis: Rat (100%). Type of Immunogen: Synthetic peptide
Specificity:	Rat DRGX
Purification:	Immunoaffinity purified

Target Details

Target:	DRGX
Alternative Name:	DRGX ( <a href="#">DRGX Products</a> )
Background:	Name/Gene ID: DRGX

## Target Details

---

Synonyms: DRGX, Dorsal root ganglia homeobox, DRG11, Paired related homeobox-like 1, PRRXL1

Gene ID: 644168

NCBI Accession: [NP\\_665710](#)

UniProt: [A6NNA5](#)

## Application Details

---

Application Notes: Optimal working dilution should be determined by the investigator.

Comment: Target Species of Antibody: Rat

Restrictions: For Research Use only

## Handling

---

Format: Lyophilized

Reconstitution: Distilled water

Concentration: Lot specific

Buffer: Lyophilized from PBS

Storage: 4 °C, -20 °C

Storage Comment: Long term: -20°C, the use of 50% glycerol is recommended if storing aliquots in -20°C for long term use (up to 1 year)

Short term (less than 1 week): 4°C. Avoid freeze-thaw cycles.

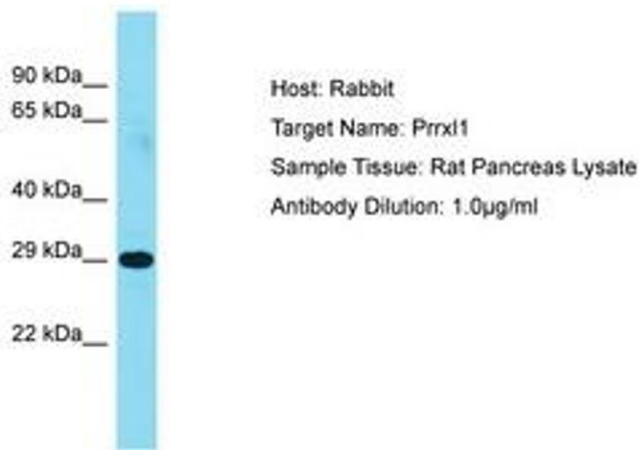


Image 1.