



Datasheet for ABIN6750249
anti-ARNTL antibody (AA 556-605)



[Go to Product page](#)

1 Image

Overview

Quantity:	100 µL
Target:	ARNTL
Binding Specificity:	AA 556-605
Reactivity:	Human, Rat, Mouse
Host:	Rabbit
Clonality:	Polyclonal
Conjugate:	This ARNTL antibody is un-conjugated
Application:	Western Blotting (WB)

Product Details

Immunogen:	Synthetic peptide located between aa556-605 of mouse Arntl (Q3UHZ2, NP_031515). Percent identity by BLAST analysis: Mouse, Rat (100%). Type of Immunogen: Synthetic peptide
Specificity:	Mouse ARNTL / BMAL1
Purification:	Immunoaffinity purified

Target Details

Target:	ARNTL
Alternative Name:	ARNTL / BMAL1 (ARNTL Products)
Background:	Name/Gene ID: ARNTL

Target Details

Synonyms: ARNTL, BHLH-PAS protein JAP3, BHLHe5, BMAL1c, JAP3, PASD3, Member of PAS protein 3, MOP3, TIC, Brain and muscle ARNT-like 1, Member of PAS superfamily 3

Gene ID: 406

NCBI Accession: [NP_031515](#)

UniProt: [O00327](#)

Pathways: [Regulation of Lipid Metabolism by PPARAlpha](#), [Protein targeting to Nucleus](#), [Warburg Effect](#)

Application Details

Application Notes: Optimal working dilution should be determined by the investigator.

Comment: Target Species of Antibody: Mouse

Restrictions: For Research Use only

Handling

Format: Lyophilized

Reconstitution: Distilled water

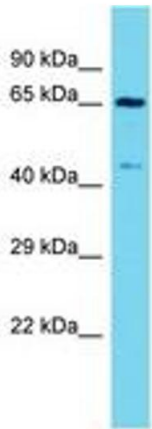
Concentration: Lot specific

Buffer: Lyophilized from PBS

Storage: 4 °C, -20 °C

Storage Comment: Long term: -20°C, the use of 50% glycerol is recommended if storing aliquots in -20°C for long term use (up to 1 year)

Short term (less than 1 week): 4°C. Avoid freeze-thaw cycles.



Host: Rabbit
Target Name: Arntl
Sample Tissue: Mouse Stomach Lysate
Antibody Dilution: 1.0µg/ml

Image 1.