

Datasheet for ABIN6750252
anti-RELB antibody (AA 380-429)



[Go to Product page](#)

1 Image

Overview

Quantity:	100 µL
Target:	RELB
Binding Specificity:	AA 380-429
Reactivity:	Human, Mouse, Rat
Host:	Rabbit
Clonality:	Polyclonal
Conjugate:	This RELB antibody is un-conjugated
Application:	Western Blotting (WB)

Product Details

Immunogen:	Synthetic peptide located between aa380-429 of rat Relb. Percent identity by BLAST analysis: Mouse, Rat (100%). Type of Immunogen: Synthetic peptide
Specificity:	Rat RELB
Purification:	Immunoaffinity purified

Target Details

Target:	RELB
Alternative Name:	RELB (RELB Products)
Background:	Name/Gene ID: RELB

Target Details

Synonyms: RELB, REL-B, Transcription factor RelB, I-Rel, IREL

Gene ID: 5971

UniProt: [Q01201](#)

Pathways: [NF-kappaB Signaling](#), [RTK Signaling](#)

Application Details

Application Notes: Optimal working dilution should be determined by the investigator.

Comment: Target Species of Antibody: Rat

Restrictions: For Research Use only

Handling

Format: Lyophilized

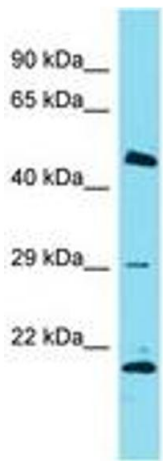
Reconstitution: Distilled water

Concentration: Lot specific

Buffer: Lyophilized from PBS

Storage: 4 °C, -20 °C

Storage Comment: Long term: -20°C, the use of 50% glycerol is recommended if storing aliquots in -20°C for long term use (up to 1 year)
Short term (less than 1 week): 4°C. Avoid freeze-thaw cycles.



Host: Rabbit
Target Name: Relb
Sample Tissue: Rat Thymus Lysate
Antibody Dilution: 1.0µg/ml

Image 1.