



[Go to Product page](#)

Datasheet for ABIN6750267  
**anti-FIGLA antibody (C-Term)**

1 Image

Overview

Quantity:	100 µL
Target:	FIGLA
Binding Specificity:	C-Term
Reactivity:	Human, Mouse
Host:	Rabbit
Clonality:	Polyclonal
Conjugate:	This FIGLA antibody is un-conjugated
Application:	Western Blotting (WB)

Product Details

Immunogen:	Synthetic peptide from C-Terminus of mouse Figla (O55208, NP_036143). Percent identity by BLAST analysis: Mouse (100%).  Type of Immunogen: Synthetic peptide
Specificity:	Mouse FIGLA
Purification:	Immunoaffinity purified

Target Details

Target:	FIGLA
Alternative Name:	FIGLA ( <a href="#">FIGLA Products</a> )
Background:	Name/Gene ID: FIGLA

## Target Details

---

Synonyms: FIGLA, BHLHC8, FIGALPHA, Factor in the germline alpha, Transcription factor FIGa, POF6

Gene ID: 344018

NCBI Accession: [NP\\_036143](#)

UniProt: [Q6QHK4](#)

## Application Details

---

Application Notes: Optimal working dilution should be determined by the investigator.

Comment: Target Species of Antibody: Mouse

Restrictions: For Research Use only

## Handling

---

Format: Lyophilized

Reconstitution: Distilled water

Concentration: Lot specific

Buffer: Lyophilized from PBS

Storage: 4 °C, -20 °C

Storage Comment: Long term: -20°C, the use of 50% glycerol is recommended if storing aliquots in -20°C for long term use (up to 1 year)

Short term (less than 1 week): 4°C. Avoid freeze-thaw cycles.

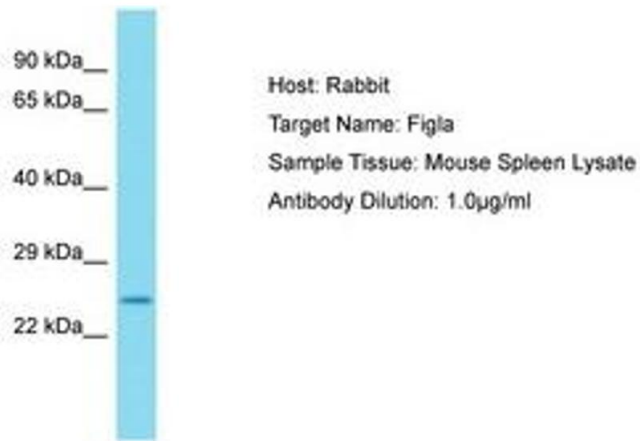


Image 1.