



[Go to Product page](#)

Datasheet for ABIN6750277
anti-HSFY2 antibody (AA 227-276)

1 Image

Overview

Quantity:	100 µL
Target:	HSFY2
Binding Specificity:	AA 227-276
Reactivity:	Mouse, Human
Host:	Rabbit
Clonality:	Polyclonal
Conjugate:	This HSFY2 antibody is un-conjugated
Application:	Western Blotting (WB)

Product Details

Immunogen:	Synthetic peptide located between aa227-276 of mouse Hsfy2 (Q80Y37, NP_081937). Percent identity by BLAST analysis: Mouse (100%). Type of Immunogen: Synthetic peptide
Specificity:	Mouse HSFY2
Purification:	Immunoaffinity purified

Target Details

Target:	HSFY2
Alternative Name:	HSFY2 (HSFY2 Products)
Background:	Name/Gene ID: HSFY2

Target Details

Family: Transcription Factor

Synonyms: HSFY2, HSFY, HSF2-like, HSF2L

Gene ID: 159119

NCBI Accession: [NP_081937](#)

UniProt: [Q96LI6](#)

Application Details

Application Notes: Optimal working dilution should be determined by the investigator.

Comment: Target Species of Antibody: Mouse

Restrictions: For Research Use only

Handling

Format: Lyophilized

Reconstitution: Distilled water

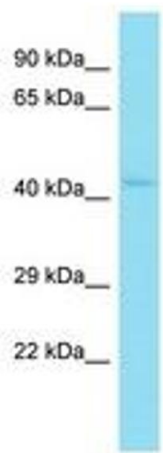
Concentration: Lot specific

Buffer: Lyophilized from PBS

Storage: 4 °C, -20 °C

Storage Comment: Long term: -20°C, the use of 50% glycerol is recommended if storing aliquots in -20°C for long term use (up to 1 year)

Short term (less than 1 week): 4°C. Avoid freeze-thaw cycles.



Host: Rabbit
Target Name: Hsfy2
Sample Tissue: Mouse Brain Lysate
Antibody Dilution: 1.0µg/ml

Image 1.