



[Go to Product page](#)

Datasheet for ABIN6750284

anti-PTGES2 antibody (AA 281-330)

1 Image

Overview

Quantity:	100 µL
Target:	PTGES2
Binding Specificity:	AA 281-330
Reactivity:	Human, Mouse
Host:	Rabbit
Clonality:	Polyclonal
Conjugate:	This PTGES2 antibody is un-conjugated
Application:	Western Blotting (WB)

Product Details

Immunogen:	Synthetic peptide located between aa281-330 of mouse Ptges2 (Q8BWM0, NP_598544). Percent identity by BLAST analysis: Mouse (100%). Type of Immunogen: Synthetic peptide
Specificity:	Mouse PTGES2
Purification:	Immunoaffinity purified

Target Details

Target:	PTGES2
Alternative Name:	PTGES2 (PTGES2 Products)
Background:	Name/Gene ID: PTGES2

Target Details

Synonyms: PTGES2, C9orf15, GATE-binding factor 1, GBF-1, MPGES-2, PGES2, Prostaglandin E synthase 2

Gene ID: 80142

NCBI Accession: [NP_598544](#)

UniProt: [Q9H7Z7](#)

Pathways: [Interferon-gamma Pathway](#), [Cell RedoxHomeostasis](#), [SARS-CoV-2 Protein Interactome](#)

Application Details

Application Notes: Optimal working dilution should be determined by the investigator.

Comment: Target Species of Antibody: Mouse

Restrictions: For Research Use only

Handling

Format: Lyophilized

Reconstitution: Distilled water

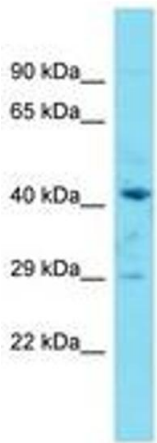
Concentration: Lot specific

Buffer: Lyophilized from PBS

Storage: 4 °C, -20 °C

Storage Comment: Long term: -20°C, the use of 50% glycerol is recommended if storing aliquots in -20°C for long term use (up to 1 year)

Short term (less than 1 week): 4°C. Avoid freeze-thaw cycles.



Host: Rabbit
Target Name: Ptges2
Sample Tissue: Mouse Spleen Lysate
Antibody Dilution: 1.0µg/ml

Image 1.