

Datasheet for ABIN6750292  
**anti-RHOX8 antibody (AA 180-229)**



[Go to Product page](#)

1 Image

## Overview

Quantity:	100 µL
Target:	RHOX8
Binding Specificity:	AA 180-229
Reactivity:	Mouse, Human
Host:	Rabbit
Clonality:	Polyclonal
Conjugate:	This RHOX8 antibody is un-conjugated
Application:	Western Blotting (WB)

## Product Details

Immunogen:	Synthetic peptide located between aa180-229 of mouse Rhox8 (Q6VSS7, NP_001004193). Percent identity by BLAST analysis: Mouse (100%).  Type of Immunogen: Synthetic peptide
Specificity:	Mouse RHOX8
Purification:	Immunoaffinity purified

## Target Details

Target:	RHOX8
Alternative Name:	RHOX8 ( <a href="#">RHOX8 Products</a> )
Background:	Name/Gene ID: Rhox8

## Target Details

---

Synonyms: Rhox8, Reproductive homeobox 8

Gene ID: 434768

NCBI Accession: [NP\\_001004193](#)

## Application Details

---

Application Notes: Optimal working dilution should be determined by the investigator.

Comment: Target Species of Antibody: Mouse

Restrictions: For Research Use only

## Handling

---

Format: Lyophilized

Reconstitution: Distilled water

Concentration: Lot specific

Buffer: Lyophilized from PBS

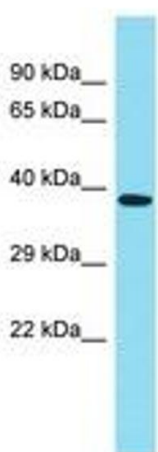
Storage: 4 °C, -20 °C

Storage Comment: Long term: -20°C, the use of 50% glycerol is recommended if storing aliquots in -20°C for long term use (up to 1 year)

Short term (less than 1 week): 4°C. Avoid freeze-thaw cycles.

## Images

---



Host: Rabbit  
Target Name: Rhox8  
Sample Tissue: Mouse Testis Lysate  
Antibody Dilution: 1.0µg/ml

**Image 1.**