

Datasheet for ABIN6750321
anti-LRRC19 antibody (AA 251-300)



[Go to Product page](#)

1 Image

Overview

Quantity:	100 µL
Target:	LRRC19
Binding Specificity:	AA 251-300
Reactivity:	Human, Mouse
Host:	Rabbit
Clonality:	Polyclonal
Conjugate:	This LRRC19 antibody is un-conjugated
Application:	Western Blotting (WB)

Product Details

Immunogen:	Synthetic peptide located between aa251-300 of mouse Lrrc19 (Q8BZT5, NP_780514). Percent identity by BLAST analysis: Mouse (100%). Type of Immunogen: Synthetic peptide
Specificity:	Mouse LRRC19
Purification:	Immunoaffinity purified

Target Details

Target:	LRRC19
Alternative Name:	LRRC19 (LRRC19 Products)
Background:	Name/Gene ID: LRRC19

Target Details

Synonyms: LRRRC19

Gene ID: 64922

NCBI Accession: [NP_780514](#)

UniProt: [Q9H756](#)

Application Details

Application Notes: Optimal working dilution should be determined by the investigator.

Comment: Target Species of Antibody: Mouse

Restrictions: For Research Use only

Handling

Format: Lyophilized

Reconstitution: Distilled water

Concentration: Lot specific

Buffer: Lyophilized from PBS

Storage: 4 °C, -20 °C

Storage Comment: Long term: -20°C, the use of 50% glycerol is recommended if storing aliquots in -20°C for long term use (up to 1 year)
Short term (less than 1 week): 4°C. Avoid freeze-thaw cycles.

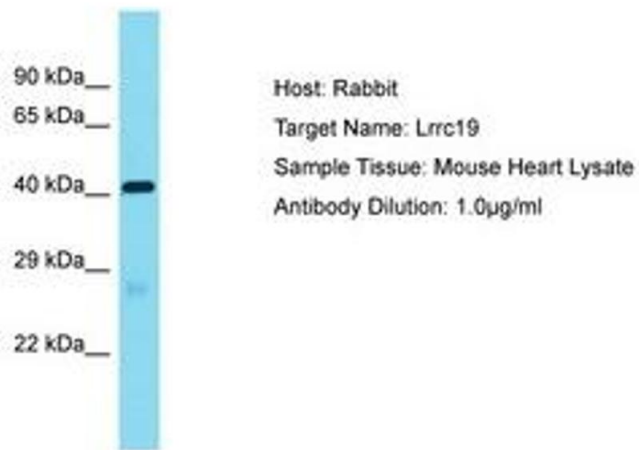


Image 1.