



[Go to Product page](#)

Datasheet for ABIN6750329
anti-DUSP7 antibody (AA 139-188)

1 Image

Overview

Quantity:	100 µL
Target:	DUSP7
Binding Specificity:	AA 139-188
Reactivity:	Human, Mouse, Rat, Cow, Guinea Pig, Horse, Pig
Host:	Rabbit
Clonality:	Polyclonal
Conjugate:	This DUSP7 antibody is un-conjugated
Application:	Western Blotting (WB)

Product Details

Immunogen:	Synthetic peptide located between aa139-188 of rat Dusp7 (Q63340). Percent identity by BLAST analysis: Human, Chimpanzee, Mouse, Rat, Bovine, Horse, Pig, Guinea pig (100%). Type of Immunogen: Synthetic peptide
Specificity:	Rat DUSP7
Purification:	Immunoaffinity purified

Target Details

Target:	DUSP7
Alternative Name:	DUSP7 (DUSP7 Products)
Background:	Name/Gene ID: DUSP7

Target Details

Subfamily: Dual specificity MKP

Family: Protein Phosphatase

Synonyms: DUSP7, Dual specificity phosphatase 7, Map kinase phosphatase x, MKPX, VHX, PYST2, Dual-specificity phosphatase-7, MKP-X

Gene ID: 1849

UniProt: [Q16829](#)

Pathways: [Neurotrophin Signaling Pathway](#), [Activation of Innate immune Response](#), [Toll-Like Receptors Cascades](#)

Application Details

Application Notes: Optimal working dilution should be determined by the investigator.

Comment: Target Species of Antibody: Rat

Restrictions: For Research Use only

Handling

Format: Lyophilized

Reconstitution: Distilled water

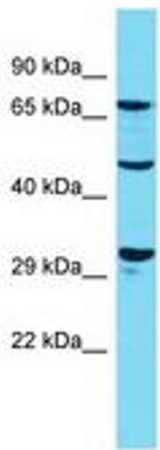
Concentration: Lot specific

Buffer: Lyophilized from PBS

Storage: 4 °C, -20 °C

Storage Comment: Long term: -20°C, the use of 50% glycerol is recommended if storing aliquots in -20°C for long term use (up to 1 year)

Short term (less than 1 week): 4°C. Avoid freeze-thaw cycles.



Host: Rabbit
Target Name: Dusp7
Sample Tissue: Rat Pancreas Lysate
Antibody Dilution: 1.0µg/ml

Image 1.