



[Go to Product page](#)

Datasheet for ABIN6750332  
**anti-AP4S1 antibody (AA 35-84)**

1 Image

### Overview

Quantity:	100 µL
Target:	AP4S1 (AP4s1)
Binding Specificity:	AA 35-84
Reactivity:	Human, Mouse, Rat
Host:	Rabbit
Clonality:	Polyclonal
Conjugate:	This AP4S1 antibody is un-conjugated
Application:	Western Blotting (WB)

### Product Details

Immunogen:	Synthetic peptide located between aa35-84 of rat Ap4s1 (F1M5X2, NP_001124471). Percent identity by BLAST analysis: Mouse, Rat (100%).  Type of Immunogen: Synthetic peptide
Specificity:	Rat AP4S1
Purification:	Immunoaffinity purified

### Target Details

Target:	AP4S1 (AP4s1)
Alternative Name:	AP4S1 ( <a href="#">AP4s1 Products</a> )
Background:	Name/Gene ID: AP4S1

## Target Details

---

Synonyms: AP4S1, AP-4 complex subunit sigma-1, AP47B, CLA20, CLAPS4, Sigma4-adaptin, Sigma-1 subunit of AP-4, SPG52, CPSQ6, Sigma-4-adaptin

Gene ID: 11154

NCBI Accession: [NP\\_001124471](#)

UniProt: [Q9Y587](#)

## Application Details

---

Application Notes: Optimal working dilution should be determined by the investigator.

Comment: Target Species of Antibody: Rat

Restrictions: For Research Use only

## Handling

---

Format: Lyophilized

Reconstitution: Distilled water

Concentration: Lot specific

Buffer: Lyophilized from PBS

Storage: 4 °C, -20 °C

Storage Comment: Long term: -20°C, the use of 50% glycerol is recommended if storing aliquots in -20°C for long term use (up to 1 year)

Short term (less than 1 week): 4°C. Avoid freeze-thaw cycles.

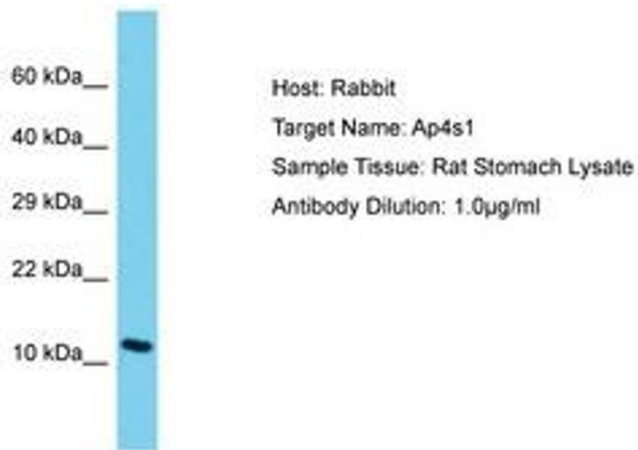


Image 1.