



[Go to Product page](#)

Datasheet for ABIN6750351
anti-Glycerol Kinase antibody (AA 101-150)

1 Image

Overview

Quantity:	100 µL
Target:	Glycerol Kinase (GK)
Binding Specificity:	AA 101-150
Reactivity:	Human, Mouse
Host:	Rabbit
Clonality:	Polyclonal
Conjugate:	This Glycerol Kinase antibody is un-conjugated
Application:	Western Blotting (WB)

Product Details

Immunogen:	Synthetic peptide located between aa101-150 of mouse Gyk (Q3TEN9, NP_032220). Percent identity by BLAST analysis: Mouse (100%). Type of Immunogen: Synthetic peptide
Specificity:	Mouse GK / Glycerol Kinase
Purification:	Immunoaffinity purified

Target Details

Target:	Glycerol Kinase (GK)
Alternative Name:	GK / Glycerol Kinase (GK Products)
Background:	Name/Gene ID: GK

Target Details

Family: Non-protein Kinase

Synonyms: GK, GKD, GK1, Glycerokinase, Glycerol kinase

Gene ID: 2710

NCBI Accession: [NP_032220](#)

UniProt: [P32189](#)

Application Details

Application Notes: Optimal working dilution should be determined by the investigator.

Comment: Target Species of Antibody: Mouse

Restrictions: For Research Use only

Handling

Format: Lyophilized

Reconstitution: Distilled water

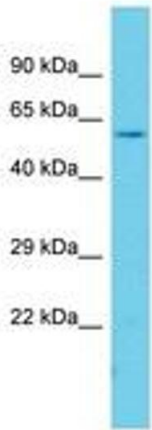
Concentration: Lot specific

Buffer: Lyophilized from PBS

Storage: 4 °C, -20 °C

Storage Comment: Long term: -20°C, the use of 50% glycerol is recommended if storing aliquots in -20°C for long term use (up to 1 year)

Short term (less than 1 week): 4°C. Avoid freeze-thaw cycles.



Host: Rabbit
Target Name: Gyk
Sample Tissue: Mouse Stomach Lysate
Antibody Dilution: 1.0µg/ml

Image 1.