

Datasheet for ABIN6750358
anti-HMGCL antibody (AA 251-300)[Go to Product page](#)

1 Image

Overview

Quantity:	100 µL
Target:	HMGCL
Binding Specificity:	AA 251-300
Reactivity:	Human, Rat
Host:	Rabbit
Clonality:	Polyclonal
Conjugate:	This HMGCL antibody is un-conjugated
Application:	Western Blotting (WB)

Product Details

Immunogen:	Synthetic peptide located between aa251-300 of rat Hmgcl (P97519, NP_077362). Percent identity by BLAST analysis: Rat (100%).
	Type of Immunogen: Synthetic peptide
Specificity:	Rat HMGCL
Purification:	Immunoaffinity purified

Target Details

Target:	HMGCL
Alternative Name:	HMGCL (HMGCL Products)
Background:	Name/Gene ID: HMGCL

Target Details

Synonyms: HMGCL, HL, HMG-CoA lyase, Hydroxymethylglutaricaciduria

Gene ID: 3155

NCBI Accession: [NP_077362](#)

UniProt: [P35914](#)

Application Details

Application Notes: Optimal working dilution should be determined by the investigator.

Comment: Target Species of Antibody: Rat

Restrictions: For Research Use only

Handling

Format: Lyophilized

Reconstitution: Distilled water

Concentration: Lot specific

Buffer: Lyophilized from PBS

Storage: 4 °C, -20 °C

Storage Comment: Long term: -20°C, the use of 50% glycerol is recommended if storing aliquots in -20°C for long term use (up to 1 year)
Short term (less than 1 week): 4°C. Avoid freeze-thaw cycles.

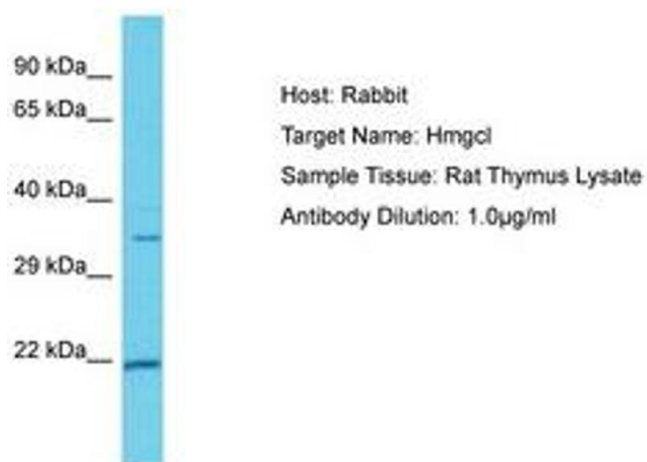


Image 1.