



[Go to Product page](#)

Datasheet for ABIN6750365

anti-Retinoblastoma Binding Protein 4 antibody (C-Term)

1 Image

Overview

Quantity:	100 µL
Target:	Retinoblastoma Binding Protein 4 (RBBP4)
Binding Specificity:	C-Term
Reactivity:	Human, Mouse, Rat, Cow, Guinea Pig, Horse, Rabbit, Pig
Host:	Rabbit
Clonality:	Polyclonal
Conjugate:	This Retinoblastoma Binding Protein 4 antibody is un-conjugated
Application:	Western Blotting (WB)

Product Details

Immunogen:	Synthetic peptide from C-Terminus of mouse Rbbp4 (Q60972, NP_033056). Percent identity by BLAST analysis: Human, Chimpanzee, Mouse, Rat, Bovine, Rabbit, Horse, Pig, Guinea pig (100%). Type of Immunogen: Synthetic peptide
Specificity:	Mouse RBBP4 / RBAP48
Purification:	Immunoaffinity purified

Target Details

Target:	Retinoblastoma Binding Protein 4 (RBBP4)
Alternative Name:	RBBP4 / RBAP48 (RBBP4 Products)

Target Details

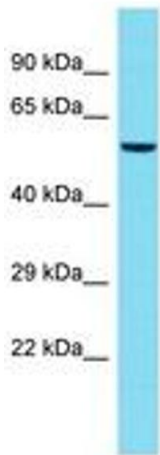
Background:	Name/Gene ID: RBBP4 Synonyms: RBBP4, CAF-I p48, CAF-1 subunit C, CAF-I 48 kDa subunit, MSI1 protein homolog, Histone-binding protein RBBP4, NURF55, RBBP-4, RBAP48
Gene ID:	5928
NCBI Accession:	NP_033056
UniProt:	Q09028
Pathways:	Cell Division Cycle , Mitotic G1-G1/S Phases , Stem Cell Maintenance , Chromatin Binding , Protein targeting to Nucleus

Application Details

Application Notes:	Optimal working dilution should be determined by the investigator.
Comment:	Target Species of Antibody: Mouse
Restrictions:	For Research Use only

Handling

Format:	Lyophilized
Reconstitution:	Distilled water
Concentration:	Lot specific
Buffer:	Lyophilized from PBS
Storage:	4 °C,-20 °C
Storage Comment:	Long term: -20°C, the use of 50% glycerol is recommended if storing aliquots in -20°C for long term use (up to 1 year) Short term (less than 1 week): 4°C. Avoid freeze-thaw cycles.



Host: Rabbit
Target Name: Rbbp4
Sample Tissue: Mouse Testis Lysate
Antibody Dilution: 1.0µg/ml

Image 1.