



Datasheet for ABIN6750384  
**anti-CAMK1D antibody (AA 39-88)**



[Go to Product page](#)

1 Image

Overview

Quantity:	100 µL
Target:	CAMK1D
Binding Specificity:	AA 39-88
Reactivity:	Human, Mouse, Rat, Guinea Pig, Rabbit
Host:	Rabbit
Clonality:	Polyclonal
Conjugate:	This CAMK1D antibody is un-conjugated
Application:	Western Blotting (WB)

Product Details

Immunogen:	Synthetic peptide located between aa39-88 of mouse Camk1d (NP_796317). Percent identity by BLAST analysis: Human, Chimpanzee, Mouse, Rat, Rabbit, Guinea pig (100%). Type of Immunogen: Synthetic peptide
Specificity:	Mouse CAMK1D
Purification:	Immunoaffinity purified

Target Details

Target:	CAMK1D
Alternative Name:	CAMK1D ( <a href="#">CAMK1D Products</a> )
Background:	Name/Gene ID: CAMK1D

## Target Details

---

Subfamily: CAMK1

Family: Protein Kinase

Synonyms: CAMK1D, CaM kinase ID, CaMKI-like protein kinase, CaMKID, CKLiK, CaM kinase I delta, CaM-K1, CaMKI delta, CaM-KI delta, CaMKI-like kinase

---

Gene ID: 57118

---

NCBI Accession: [NP\\_796317](#)

---

UniProt: [Q8IU85](#)

## Application Details

---

Application Notes: Optimal working dilution should be determined by the investigator.

---

Comment: Target Species of Antibody: Mouse

---

Restrictions: For Research Use only

## Handling

---

Format: Lyophilized

---

Reconstitution: Distilled water

---

Concentration: Lot specific

---

Buffer: Lyophilized from PBS

---

Storage: 4 °C, -20 °C

---

Storage Comment: Long term: -20°C, the use of 50% glycerol is recommended if storing aliquots in -20°C for long term use (up to 1 year)

Short term (less than 1 week): 4°C. Avoid freeze-thaw cycles.

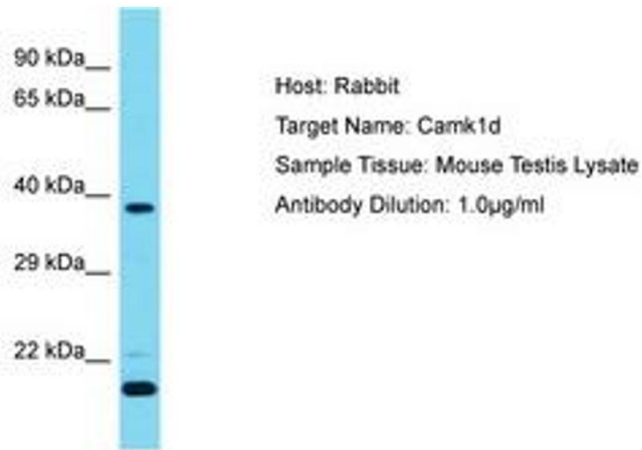


Image 1.