



[Go to Product page](#)

Datasheet for ABIN6750418  
**anti-NAE1 antibody (AA 308-357)**

1 Image

Overview

Quantity:	100 µL
Target:	NAE1
Binding Specificity:	AA 308-357
Reactivity:	Human, Mouse, Rat
Host:	Rabbit
Clonality:	Polyclonal
Conjugate:	This NAE1 antibody is un-conjugated
Application:	Western Blotting (WB)

Product Details

Immunogen:	Synthetic peptide located between aa308-357 of mouse Nae1 (Q8VBW6, NP_659180). Percent identity by BLAST analysis: Mouse, Rat (100%). Type of Immunogen: Synthetic peptide
Specificity:	Mouse NAE1 / APPBP1
Purification:	Immunoaffinity purified

Target Details

Target:	NAE1
Alternative Name:	NAE1 / APPBP1 ( <a href="#">NAE1 Products</a> )
Background:	Name/Gene ID: NAE1

## Target Details

---

Synonyms: NAE1, A-116A10.1, APPBP1, HPP1, Proto-oncogene protein 1, APP-BP1, Ula-1, Protooncogene protein 1

Gene ID: 8883

NCBI Accession: [NP\\_659180](#)

UniProt: [Q13564](#)

## Application Details

---

Application Notes: Optimal working dilution should be determined by the investigator.

Comment: Target Species of Antibody: Mouse

Restrictions: For Research Use only

## Handling

---

Format: Lyophilized

Reconstitution: Distilled water

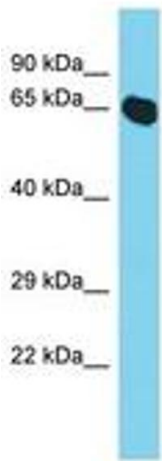
Concentration: Lot specific

Buffer: Lyophilized from PBS

Storage: 4 °C, -20 °C

Storage Comment: Long term: -20°C, the use of 50% glycerol is recommended if storing aliquots in -20°C for long term use (up to 1 year)

Short term (less than 1 week): 4°C. Avoid freeze-thaw cycles.



Host: Rabbit  
Target Name: Nae1  
Sample Tissue: Mouse Lung Lysate  
Antibody Dilution: 1.0µg/ml

Image 1.