



[Go to Product page](#)

Datasheet for ABIN6750436  
**anti-RND3 antibody (C-Term)**

1 Image

Overview

Quantity:	100 µL
Target:	RND3
Binding Specificity:	C-Term
Reactivity:	Human, Mouse, Rat, Pig, Horse, Rabbit, Cow, Guinea Pig
Host:	Rabbit
Clonality:	Polyclonal
Conjugate:	This RND3 antibody is un-conjugated
Application:	Western Blotting (WB)

Product Details

Immunogen:	Synthetic peptide from C-Terminus of human RND3 (P61587, NP_005159). Percent identity by BLAST analysis: Human, Chimpanzee, Mouse, Rat, Bovine, Rabbit, Horse, Pig, Guinea pig (100%).  Type of Immunogen: Synthetic peptide
Specificity:	Human RHOE / RND3
Purification:	Immunoaffinity purified

Target Details

Target:	RND3
Alternative Name:	RHOE / RND3 ( <a href="#">RND3 Products</a> )

## Target Details

---

Background: Name/Gene ID: RND3  
Family: Ras GTPase superfamily IPR001806  
Synonyms: RND3, ARHE, Rho family GTPase 3, RhoE, Small GTP binding protein Rho8, MemB, Rho8, Protein MemB

---

Gene ID: 390

---

NCBI Accession: [NP\\_005159](#)

---

UniProt: [P61587](#)

---

## Application Details

---

Application Notes: Optimal working dilution should be determined by the investigator.

---

Comment: Target Species of Antibody: Human

---

Restrictions: For Research Use only

---

## Handling

---

Format: Lyophilized

---

Reconstitution: Distilled water

---

Concentration: Lot specific

---

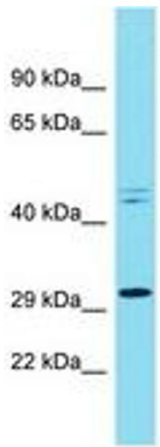
Buffer: Lyophilized from PBS

---

Storage: 4 °C, -20 °C

---

Storage Comment: Long term: -20°C, the use of 50% glycerol is recommended if storing aliquots in -20°C for long term use (up to 1 year)  
Short term (less than 1 week): 4°C. Avoid freeze-thaw cycles.



Host: Rabbit  
Target Name: RND3  
Sample Tissue: NCI-H226 Cell Lysate  
Antibody Dilution: 1.0µg/ml

Image 1.