

Datasheet for ABIN6750439
anti-MAP6 antibody (AA 360-409)



[Go to Product page](#)

1 Image

Overview

Quantity:	100 µL
Target:	MAP6
Binding Specificity:	AA 360-409
Reactivity:	Human
Host:	Rabbit
Clonality:	Polyclonal
Conjugate:	This MAP6 antibody is un-conjugated
Application:	Western Blotting (WB)

Product Details

Immunogen:	Synthetic peptide located between aa360-409 of human MAP6 (Q96JE9, NP_149052). Percent identity by BLAST analysis: Human, Chimpanzee (100%). Type of Immunogen: Synthetic peptide
Specificity:	Human MAP6
Purification:	Immunoaffinity purified

Target Details

Target:	MAP6
Alternative Name:	MAP6 (MAP6 Products)
Background:	Name/Gene ID: MAP6

Target Details

Synonyms: MAP6, MAP-6, MTAP6, KIAA1878, Stable tubule-only polypeptide, STOP, N-STOP

Gene ID: 4135

NCBI Accession: [NP_149052](#)

UniProt: [Q96JE9](#)

Application Details

Application Notes: Optimal working dilution should be determined by the investigator.

Comment: Target Species of Antibody: Human

Restrictions: For Research Use only

Handling

Format: Lyophilized

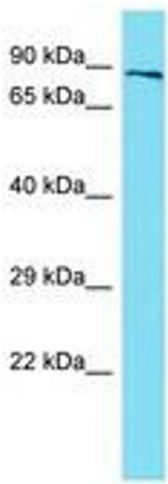
Reconstitution: Distilled water

Concentration: Lot specific

Buffer: Lyophilized from PBS

Storage: 4 °C, -20 °C

Storage Comment: Long term: -20°C, the use of 50% glycerol is recommended if storing aliquots in -20°C for long term use (up to 1 year)
Short term (less than 1 week): 4°C. Avoid freeze-thaw cycles.



Host: Rabbit
Target Name: MAP6
Sample Tissue: Placenta Lysate
Antibody Dilution: 1.0µg/ml

Image 1.