



[Go to Product page](#)

Datasheet for ABIN6750446  
**anti-UTP23 antibody (AA 151-200)**

1 Image

Overview

Quantity:	100 µL
Target:	UTP23
Binding Specificity:	AA 151-200
Reactivity:	Human
Host:	Rabbit
Clonality:	Polyclonal
Conjugate:	This UTP23 antibody is un-conjugated
Application:	Western Blotting (WB)

Product Details

Immunogen:	Synthetic peptide located between aa151-200 of human UTP23 (Q9BRU9, NP_115710). Percent identity by BLAST analysis: Human, Chimpanzee (100%).  Type of Immunogen: Synthetic peptide
Specificity:	Human UTP23
Purification:	Immunoaffinity purified

Target Details

Target:	UTP23
Alternative Name:	UTP23 ( <a href="#">UTP23 Products</a> )
Background:	Name/Gene ID: UTP23

## Target Details

---

Synonyms: UTP23, C8orf53

Gene ID: 84294

NCBI Accession: [NP\\_115710](#)

UniProt: [Q9BRU9](#)

## Application Details

---

Application Notes: Optimal working dilution should be determined by the investigator.

Comment: Target Species of Antibody: Human

Restrictions: For Research Use only

## Handling

---

Format: Lyophilized

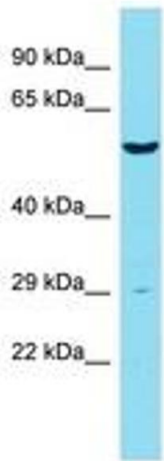
Reconstitution: Distilled water

Concentration: Lot specific

Buffer: Lyophilized from PBS

Storage: 4 °C, -20 °C

Storage Comment: Long term: -20°C, the use of 50% glycerol is recommended if storing aliquots in -20°C for long term use (up to 1 year)  
Short term (less than 1 week): 4°C. Avoid freeze-thaw cycles.



Host: Rabbit  
Target Name: UTP23  
Sample Tissue: PANC1 Cell Lysate  
Antibody Dilution: 1.0µg/ml

Image 1.