

Datasheet for ABIN6750473  
**anti-HRH3 antibody (AA 122-171)**



[Go to Product page](#)

1 Image

## Overview

Quantity:	100 µL
Target:	HRH3
Binding Specificity:	AA 122-171
Reactivity:	Human, Rat, Mouse
Host:	Rabbit
Clonality:	Polyclonal
Conjugate:	This HRH3 antibody is un-conjugated
Application:	Western Blotting (WB)

## Product Details

Immunogen:	Synthetic peptide located between aa122-171 of rat Hrh3 (Q9QYN8, NP_445958). Percent identity by BLAST analysis: Mouse, Rat (100%).  Type of Immunogen: Synthetic peptide
Specificity:	Rat Histamine 3 Receptor / HRH3
Purification:	Immunoaffinity purified

## Target Details

Target:	HRH3
Alternative Name:	HRH3 / Histamine 3 Receptor ( <a href="#">HRH3 Products</a> )
Background:	Name/Gene ID: HRH3

## Target Details

---

Subfamily: Histamine

Family: GPCR

Synonyms: HRH3, G protein-coupled receptor 97, GPCR97, H3 histamine receptor, H3R, HH3R, Histamine H3 receptor, Histamine receptor H3, G-protein coupled receptor 97, Histamine 3 receptor

---

Gene ID: 11255

---

NCBI Accession: [NP\\_445958](#)

---

UniProt: [Q9Y5N1](#)

---

Pathways: [cAMP Metabolic Process](#), [Feeding Behaviour](#)

## Application Details

---

Application Notes: Optimal working dilution should be determined by the investigator.

---

Comment: Target Species of Antibody: Rat

---

Restrictions: For Research Use only

## Handling

---

Format: Lyophilized

---

Reconstitution: Distilled water

---

Concentration: Lot specific

---

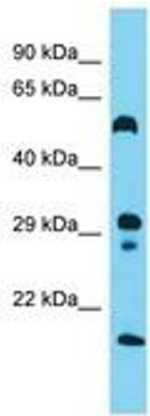
Buffer: Lyophilized from PBS

---

Storage: 4 °C, -20 °C

---

Storage Comment: Long term: -20°C, the use of 50% glycerol is recommended if storing aliquots in -20°C for long term use (up to 1 year)  
Short term (less than 1 week): 4°C. Avoid freeze-thaw cycles.



Host: Rabbit  
Target Name: Hrh3  
Sample Tissue: Rat Small Intestine Lysate  
Antibody Dilution: 1.0µg/ml

Image 1.