



[Go to Product page](#)

Datasheet for ABIN6750475
anti-NPLOC4 antibody (AA 96-145)

1 Image

Overview

Quantity:	100 µL
Target:	NPLOC4
Binding Specificity:	AA 96-145
Reactivity:	Human, Mouse
Host:	Rabbit
Clonality:	Polyclonal
Conjugate:	This NPLOC4 antibody is un-conjugated
Application:	Western Blotting (WB)

Product Details

Immunogen:	Synthetic peptide located between aa96-145 of mouse Nploc4 (P60670, NP_001181952). Percent identity by BLAST analysis: Mouse (100%). Type of Immunogen: Synthetic peptide
Specificity:	Mouse NPLOC4
Purification:	Immunoaffinity purified

Target Details

Target:	NPLOC4
Alternative Name:	NPLOC4 (NPLOC4 Products)
Background:	Name/Gene ID: NPLOC4

Target Details

Synonyms: NPLOC4, KIAA1499, NPL4, Protein NPL4

Gene ID: 55666

NCBI Accession: [NP_001181952](#)

Application Details

Application Notes: Optimal working dilution should be determined by the investigator.

Comment: Target Species of Antibody: Mouse

Restrictions: For Research Use only

Handling

Format: Lyophilized

Reconstitution: Distilled water

Concentration: Lot specific

Buffer: Lyophilized from PBS

Storage: 4 °C, -20 °C

Storage Comment: Long term: -20°C, the use of 50% glycerol is recommended if storing aliquots in -20°C for long term use (up to 1 year)

Short term (less than 1 week): 4°C. Avoid freeze-thaw cycles.

Images

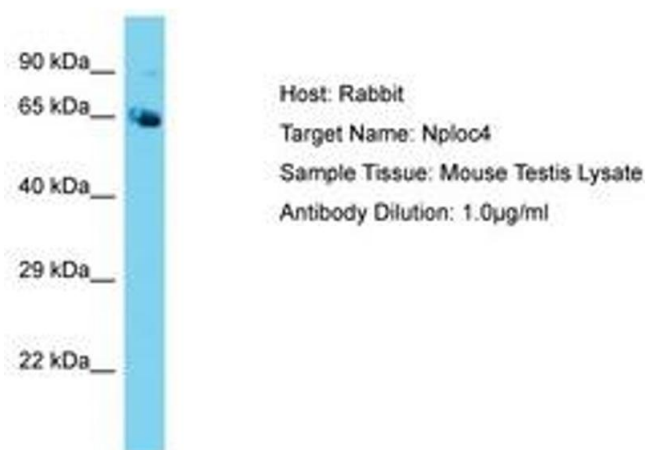


Image 1.