



[Go to Product page](#)

Datasheet for ABIN6750479

anti-MPPED2 antibody (N-Term)

1 Image

Overview

Quantity:	100 µL
Target:	MPPED2
Binding Specificity:	N-Term
Reactivity:	Human, Mouse, Rat, Cow, Horse, Rabbit, Pig, Chicken
Host:	Rabbit
Clonality:	Polyclonal
Conjugate:	This MPPED2 antibody is un-conjugated
Application:	Western Blotting (WB)

Product Details

Immunogen:	Synthetic peptide from N-Terminus of rat Mpped2 (B1WBP0, NP_942073). Percent identity by BLAST analysis: Human, Chimpanzee, Mouse, Rat, Bovine, Rabbit, Horse, Pig, Chicken (100%). Type of Immunogen: Synthetic peptide
Specificity:	Rat MPPED2
Purification:	Immunoaffinity purified

Target Details

Target:	MPPED2
Alternative Name:	MPPED2 (MPPED2 Products)
Background:	Name/Gene ID: MPPED2

Target Details

Subfamily: Protein Phosphatase - Provisional

Family: Protein Phosphatase

Synonyms: MPPED2, 239FB, 239 FB, C11orf8, DJ1024C24.1, D11S302E, FAM1B, Fetal brain protein 239, Metallophosphoesterase MPPED2, DJ873F21.1

Gene ID: 744

NCBI Accession: [NP_942073](#)

UniProt: [Q15777](#)

Application Details

Application Notes: Optimal working dilution should be determined by the investigator.

Comment: Target Species of Antibody: Rat

Restrictions: For Research Use only

Handling

Format: Lyophilized

Reconstitution: Distilled water

Concentration: Lot specific

Buffer: Lyophilized from PBS

Storage: 4 °C, -20 °C

Storage Comment: Long term: -20°C, the use of 50% glycerol is recommended if storing aliquots in -20°C for long term use (up to 1 year)

Short term (less than 1 week): 4°C. Avoid freeze-thaw cycles.

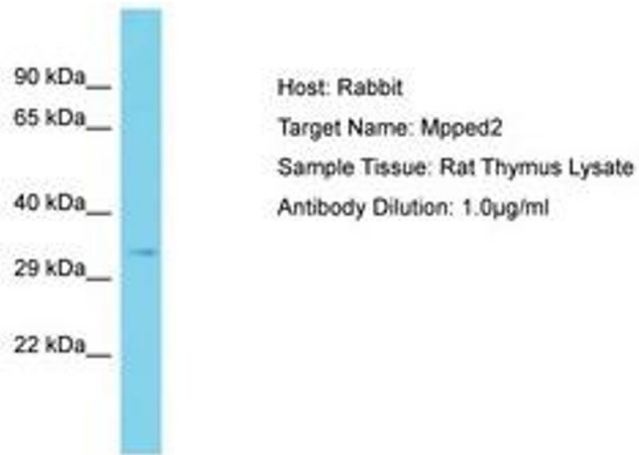


Image 1.