

Datasheet for ABIN6750494  
**anti-UBE2Z antibody (AA 208-257)**



[Go to Product page](#)

1 Image

### Overview

Quantity:	100 µL
Target:	UBE2Z
Binding Specificity:	AA 208-257
Reactivity:	Human, Mouse, Rat, Guinea Pig, Horse, Cow, Pig, Rabbit
Host:	Rabbit
Clonality:	Polyclonal
Conjugate:	This UBE2Z antibody is un-conjugated
Application:	Western Blotting (WB)

### Product Details

Immunogen:	Synthetic peptide located between aa208-257 of rat Ube2z (Q3B7D1, NP_001032732). Percent identity by BLAST analysis: Human, Chimpanzee, Mouse, Rat, Bovine, Rabbit, Horse, Pig, Guinea pig (100%).  Type of Immunogen: Synthetic peptide
Specificity:	Rat UBE2Z
Purification:	Immunoaffinity purified

### Target Details

Target:	UBE2Z
Alternative Name:	UBE2Z ( <a href="#">UBE2Z Products</a> )

## Target Details

---

Background:	Name/Gene ID: UBE2Z  Synonyms: UBE2Z, HOYS7, UBA6-specific enzyme E2, Ubiquitin carrier protein Z, Ubiquitin-protein ligase Z
Gene ID:	65264
NCBI Accession:	<a href="#">NP_001032732</a>
UniProt:	<a href="#">Q9H832</a>

## Application Details

---

Application Notes:	Optimal working dilution should be determined by the investigator.
Comment:	Target Species of Antibody: Rat
Restrictions:	For Research Use only

## Handling

---

Format:	Lyophilized
Reconstitution:	Distilled water
Concentration:	Lot specific
Buffer:	Lyophilized from PBS
Storage:	4 °C, -20 °C
Storage Comment:	Long term: -20°C, the use of 50% glycerol is recommended if storing aliquots in -20°C for long term use (up to 1 year) Short term (less than 1 week): 4°C. Avoid freeze-thaw cycles.

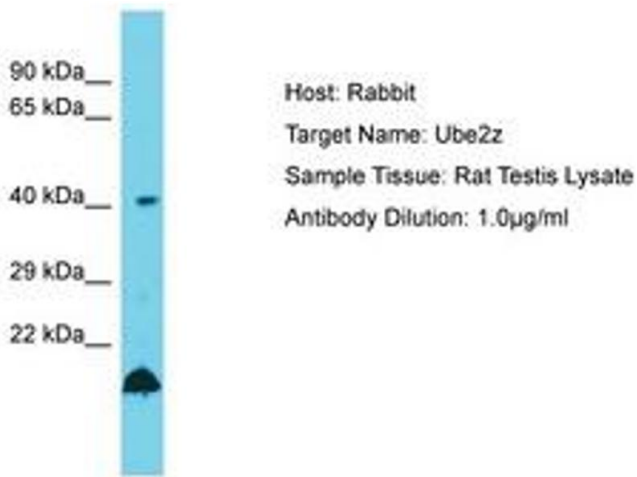


Image 1.