



[Go to Product page](#)

Datasheet for ABIN6750498  
**anti-CD1c antibody (AA 227-276)**

1 Image

### Overview

Quantity:	100 µL
Target:	CD1c (CD1C)
Binding Specificity:	AA 227-276
Reactivity:	Human
Host:	Rabbit
Clonality:	Polyclonal
Conjugate:	This CD1c antibody is un-conjugated
Application:	Western Blotting (WB)

### Product Details

Immunogen:	Synthetic peptide located between aa227-276 of human CD1C (P29017, NP_001756). Percent identity by BLAST analysis: Human (100%). Type of Immunogen: Synthetic peptide
Specificity:	Human CD1C
Purification:	Immunoaffinity purified

### Target Details

Target:	CD1c (CD1C)
Alternative Name:	CD1C ( <a href="#">CD1C Products</a> )
Background:	Name/Gene ID: CD1C

## Target Details

---

Synonyms: CD1C, BDCA1, CD1, CD1c molecule, CD1C antigen, c polypeptide, CD1c antigen, R7

Gene ID: 911

NCBI Accession: [NP\\_001756](#)

UniProt: [P29017](#)

## Application Details

---

Application Notes: Optimal working dilution should be determined by the investigator.

Comment: Target Species of Antibody: Human

Restrictions: For Research Use only

## Handling

---

Format: Lyophilized

Reconstitution: Distilled water

Concentration: Lot specific

Buffer: Lyophilized from PBS

Storage: 4 °C, -20 °C

Storage Comment: Long term: -20°C, the use of 50% glycerol is recommended if storing aliquots in -20°C for long term use (up to 1 year)  
Short term (less than 1 week): 4°C. Avoid freeze-thaw cycles.

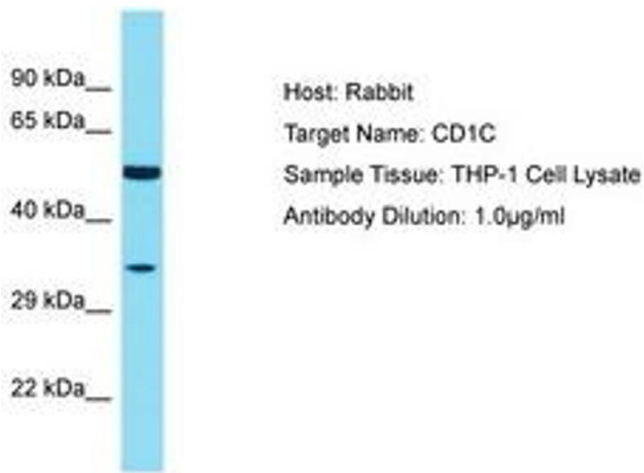


Image 1.