

Datasheet for ABIN6750510
anti-NLE1 antibody (AA 351-400)



[Go to Product page](#)

1 Image

Overview

| | |
|----------------------|--------------------------------------|
| Quantity: | 100 µL |
| Target: | NLE1 |
| Binding Specificity: | AA 351-400 |
| Reactivity: | Human, Mouse, Rat, Guinea Pig, Horse |
| Host: | Rabbit |
| Clonality: | Polyclonal |
| Conjugate: | This NLE1 antibody is un-conjugated |
| Application: | Western Blotting (WB) |

Product Details

| | |
|---------------|--|
| Immunogen: | Synthetic peptide located between aa351-400 of mouse Nle1 (Q8VEJ4, NP_663406). Percent identity by BLAST analysis: Mouse, Rat, Horse, Guinea pig (100%). Type of Immunogen: Synthetic peptide |
| Specificity: | Mouse NLE1 |
| Purification: | Immunoaffinity purified |

Target Details

| | |
|-------------------|--|
| Target: | NLE1 |
| Alternative Name: | NLE1 (NLE1 Products) |
| Background: | Name/Gene ID: NLE1 |

Target Details

Synonyms: NLE1, Notchless gene homolog, Nle, Notchless protein homolog 1

Gene ID: 54475

NCBI Accession: [NP_663406](#)

UniProt: [Q9NVX2](#)

Application Details

Application Notes: Optimal working dilution should be determined by the investigator.

Comment: Target Species of Antibody: Mouse

Restrictions: For Research Use only

Handling

Format: Lyophilized

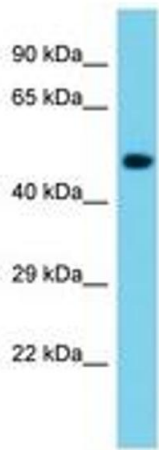
Reconstitution: Distilled water

Concentration: Lot specific

Buffer: Lyophilized from PBS

Storage: 4 °C, -20 °C

Storage Comment: Long term: -20°C, the use of 50% glycerol is recommended if storing aliquots in -20°C for long term use (up to 1 year)
Short term (less than 1 week): 4°C. Avoid freeze-thaw cycles.



Host: Rabbit
Target Name: Nle1
Sample Tissue: Mouse Brain Lysate
Antibody Dilution: 1.0µg/ml

Image 1.