



Datasheet for ABIN6750525
anti-EIF2B3 antibody (AA 121-170)



[Go to Product page](#)

1 Image

Overview

Quantity:	100 µL
Target:	EIF2B3
Binding Specificity:	AA 121-170
Reactivity:	Human, Rat
Host:	Rabbit
Clonality:	Polyclonal
Conjugate:	This EIF2B3 antibody is un-conjugated
Application:	Western Blotting (WB)

Product Details

Immunogen:	Synthetic peptide located between aa121-170 of rat Eif2b3 (P70541, NP_598293). Percent identity by BLAST analysis: Rat (100%). Type of Immunogen: Synthetic peptide
Specificity:	Rat EIF2B3
Purification:	Immunoaffinity purified

Target Details

Target:	EIF2B3
Alternative Name:	EIF2B3 (EIF2B3 Products)
Background:	Name/Gene ID: EIF2B3

Target Details

Synonyms: EIF2B3, EIF2Bgamma, EIF-2B

Gene ID: 8891

NCBI Accession: [NP_598293](#)

UniProt: [Q9NR50](#)

Application Details

Application Notes: Optimal working dilution should be determined by the investigator.

Comment: Target Species of Antibody: Rat

Restrictions: For Research Use only

Handling

Format: Lyophilized

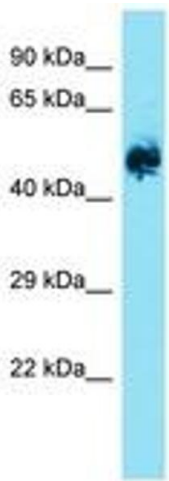
Reconstitution: Distilled water

Concentration: Lot specific

Buffer: Lyophilized from PBS

Storage: 4 °C, -20 °C

Storage Comment: Long term: -20°C, the use of 50% glycerol is recommended if storing aliquots in -20°C for long term use (up to 1 year)
Short term (less than 1 week): 4°C. Avoid freeze-thaw cycles.



Host: Rabbit
Target Name: Eif2b3
Sample Tissue: Rat Brain Lysate
Antibody Dilution: 1.0µg/ml

Image 1.