

Datasheet for ABIN6750526
anti-NEFM antibody (C-Term)



[Go to Product page](#)

1 Image

Overview

Quantity:	100 µL
Target:	NEFM
Binding Specificity:	C-Term
Reactivity:	Human, Rat, Mouse, Cow, Rabbit, Pig, Guinea Pig, Sheep
Host:	Rabbit
Clonality:	Polyclonal
Conjugate:	This NEFM antibody is un-conjugated
Application:	Western Blotting (WB)

Product Details

Immunogen:	Synthetic peptide from C-Terminus of rat Nefm (NP_058725). Percent identity by BLAST analysis: Human, Chimpanzee, Mouse, Rat, Sheep, Bovine, Rabbit, Pig, Guinea pig (100%). Type of Immunogen: Synthetic peptide
Specificity:	Rat NF-M
Purification:	Immunoaffinity purified

Target Details

Target:	NEFM
Alternative Name:	NEFM / NF-M (NEFM Products)
Background:	Name/Gene ID: NEFM

Target Details

Synonyms: NEFM, 160 kDa neurofilament protein, NEF3, NF-M, NFM, Neurofilament 3

Gene ID: 4741

NCBI Accession: [NP_058725](#)

UniProt: [P07197](#)

Pathways: [Brown Fat Cell Differentiation](#)

Application Details

Application Notes: Optimal working dilution should be determined by the investigator.

Comment: Target Species of Antibody: Rat

Restrictions: For Research Use only

Handling

Format: Lyophilized

Reconstitution: Distilled water

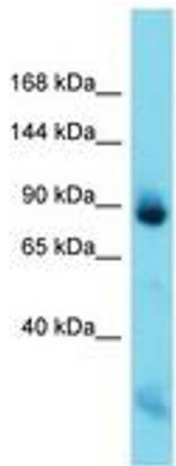
Concentration: Lot specific

Buffer: Lyophilized from PBS

Storage: 4 °C, -20 °C

Storage Comment: Long term: -20°C, the use of 50% glycerol is recommended if storing aliquots in -20°C for long term use (up to 1 year)

Short term (less than 1 week): 4°C. Avoid freeze-thaw cycles.



Host: Rabbit
Target Name: Nefm
Sample Tissue: Rat Muscle Lysate
Antibody Dilution: 1.0µg/ml

Image 1.