

Datasheet for ABIN6750527  
**anti-NME7 antibody (AA 88-137)**[Go to Product page](#)

## 1 Image

## Overview

Quantity:	100 µL
Target:	NME7
Binding Specificity:	AA 88-137
Reactivity:	Human, Rat, Mouse
Host:	Rabbit
Clonality:	Polyclonal
Conjugate:	This NME7 antibody is un-conjugated
Application:	Western Blotting (WB)

## Product Details

Immunogen:	Synthetic peptide located between aa88-137 of mouse Nme7 (Q3UMG6, NP_612187). Percent identity by BLAST analysis: Mouse, Rat (100%).  Type of Immunogen: Synthetic peptide
Specificity:	Mouse NME7
Purification:	Immunoaffinity purified

## Target Details

Target:	NME7
Alternative Name:	NME7 ( <a href="#">NME7 Products</a> )
Background:	Name/Gene ID: NME7

## Target Details

Synonyms: NME7, MN23H7, NDP kinase 7, NDK 7, Nm23-H7, NME/NM23 family member 7

Gene ID: 29922

NCBI Accession: [NP\\_612187](#)

## Application Details

Application Notes: Optimal working dilution should be determined by the investigator.

Comment: Target Species of Antibody: Mouse

Restrictions: For Research Use only

## Handling

Format: Lyophilized

Reconstitution: Distilled water

Concentration: Lot specific

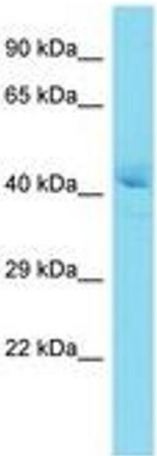
Buffer: Lyophilized from PBS

Storage: 4 °C, -20 °C

Storage Comment: Long term: -20°C, the use of 50% glycerol is recommended if storing aliquots in -20°C for long term use (up to 1 year)

Short term (less than 1 week): 4°C. Avoid freeze-thaw cycles.

## Images



Host: Rabbit  
Target Name: Nme7  
Sample Tissue: Mouse Liver Lysate  
Antibody Dilution: 1.0µg/ml

Image 1.