



[Go to Product page](#)

Datasheet for ABIN6750545
anti-C4ORF17 antibody (AA 136-185)

1 Image

Overview

Quantity:	100 µL
Target:	C4ORF17
Binding Specificity:	AA 136-185
Reactivity:	Human
Host:	Rabbit
Clonality:	Polyclonal
Conjugate:	This C4ORF17 antibody is un-conjugated
Application:	Western Blotting (WB)

Product Details

Immunogen:	Synthetic peptide located between aa136-185 of human C4orf17 (Q53FE4, NP_115525). Percent identity by BLAST analysis: Human, Chimpanzee (100%). Type of Immunogen: Synthetic peptide
Specificity:	Human C4orf17
Purification:	Immunoaffinity purified

Target Details

Target:	C4ORF17
Alternative Name:	C4orf17 (C4ORF17 Products)
Background:	Name/Gene ID: C4orf17

Target Details

Synonyms: C4orf17, DKFZP434G072

Gene ID: 84103

NCBI Accession: [NP_115525](#)

UniProt: [Q53FE4](#)

Application Details

Application Notes: Optimal working dilution should be determined by the investigator.

Comment: Target Species of Antibody: Human

Restrictions: For Research Use only

Handling

Format: Lyophilized

Reconstitution: Distilled water

Concentration: Lot specific

Buffer: Lyophilized from PBS

Storage: 4 °C, -20 °C

Storage Comment: Long term: -20°C, the use of 50% glycerol is recommended if storing aliquots in -20°C for long term use (up to 1 year)
Short term (less than 1 week): 4°C. Avoid freeze-thaw cycles.

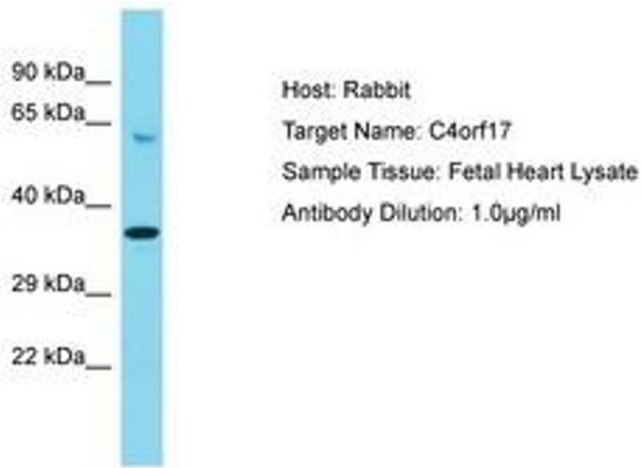


Image 1.